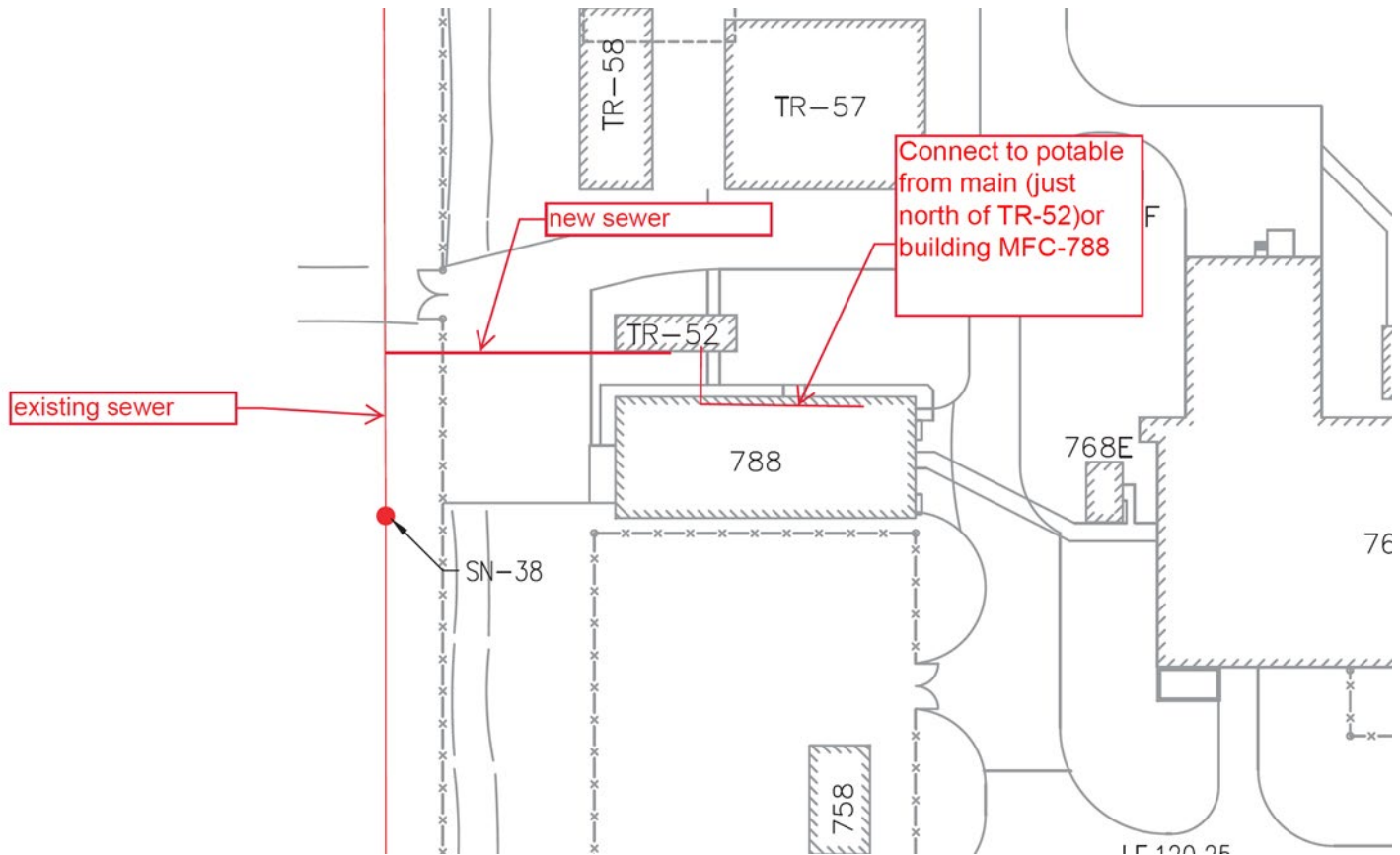


DOE-ID NEPA CX DETERMINATION Idaho National Laboratory

SECTION A. Project Title: MFC TR-52 Sewer and Potable Water Connections

SECTION B. Project Description and Purpose:

Trailer TR-52 currently does not have site sewer and potable water connections and must be manually pumped and filled frequently due to additional personnel being relocated next to it. Site potable water will be plumbed from the underground main or MFC-788 and run underground to a connection in TR-52. Sewer from TR-52 will be run underground to the west and connect into the sewer main located west of MFC-788. Heat trace will be added to the sewer and potable connections as required to protect from freezing.



SECTION C. Environmental Aspects or Potential Sources of Impact:

Air Emissions

Project grading and excavation activities have the potential to generate fugitive dust. Installation activities may produce emissions from welding, brazing, and soldering.

Discharging to Surface-, Storm-, or Ground Water

N/A

Disturbing Cultural or Biological Resources

MFC-788 was built in 1955. CRMO staff evaluated the project and found that the project activities fall under Exempted Activity #2: Routine maintenance and Exempted Activity #9: Ground disturbance within fenced facility perimeters. No CRR is required.

Activities have the potential to impact migratory birds.

Generating and Managing Waste

Construction activities may result in the generation of small amounts of hazardous waste in the form of adhesives, paints, solvents, waste concrete, PVC or metal piping scrap, scrap wood, scrap wire, paper waste, packaging material, etc. Polychlorinated biphenyl (PCB) waste could be generated when modifying buildings built before 1982 or working with pre-1982 equipment/materials. Examples include electrical equipment/components, painted surfaces, light fixtures, caulking, joint sealer, ventilation duct gaskets, and insulation. Operations may generate small amounts of hazardous waste in the form of cleaning solvents, solders, metals, and scrap metal (held for recycle whenever appropriate).

**DOE-ID NEPA CX DETERMINATION
Idaho National Laboratory**

Releasing Contaminants

When chemicals are used, there is the potential for chemicals to be spilled it air or soil.

Using, Reusing, and Conserving Natural Resources

Recycled materials will be used to the greatest extent practicable in the selection of materials. All materials will be reused and/or recycled where economically practicable. All applicable waste will be diverted from disposal in the landfill where conditions allow.

SECTION D. Determine Recommended Level of Environmental Review, Identify Reference(s), and State Justification: Identify the applicable categorical exclusion from 10 Code of Federal Regulation (CFR) 1021, Appendix B, give the appropriate justification, and the approval date.

For Categorical Exclusions (CXs), the proposed action must not: (1) threaten a violation of applicable statutory, regulatory, or permit requirements for environmental, safety, and health, or similar requirements of Department of Energy (DOE) or Executive Orders; (2) require siting and construction or major expansion of waste storage, disposal, recovery, or treatment or facilities; (3) disturb hazardous substances, pollutants, contaminants, or Comprehensive Environmental Response, Compensation, and Liability Act (CERCLA)-excluded petroleum and natural gas products that pre-exist in the environment such that there would be uncontrolled or unpermitted releases; (4) have the potential to cause significant impacts on environmentally sensitive resources (see 10 CFR 1021). In addition, no extraordinary circumstances related to the proposal exist that would affect the significance of the action. In addition, the action is not "connected" to other action actions (40 CFR 1508.25(a)(1) and is not related to other actions with individually insignificant but cumulatively significant impacts (40 CFR 1608.27(b)(7)).

References:

10 CFR 1021 Appendix D B1.15 Support Buildings.

Justification:

Project activities identified in this ECP are consistent with B1.15 Siting, construction or modification, and operation of support buildings and support structures (including, but not limited to, trailers and prefabricated and modular buildings) within or contiguous to an already developed area (where active utilities and currently used roads are readily accessible). Covered support buildings and structures include, but are not limited to, those for office purposes; parking; cafeteria services; education and training; visitor reception; computer and data processing services; health services or recreation activities; routine maintenance activities; storage of supplies and equipment for administrative services and routine maintenance activities; security (such as security posts); fire protection; small-scale fabrication (such as machine shop activities), assembly, and testing of non-nuclear equipment or components; and similar support purposes, but exclude facilities for nuclear weapons activities and waste storage activities, such as activities covered in B1.10, B1.29, B1.35, B2.6, B6.2, B6.4, B6.5, B6.6, and B6.10 of this appendix.

Is the project funded by the American Recovery and Reinvestment Act of 2009 (Recovery Act) Yes No

Approved by Jason L. Anderson, DOE-ID NEPA Compliance Officer on: 06/01/2022