

**DOE-ID NEPA CX DETERMINATION
Idaho National Laboratory**

SECTION A. Project Title: INL Northeast Corner Survey

SECTION B. Project Description and Purpose:

Landowners adjacent to the Idaho National Laboratory (INL) Site's northeast boundary have encroached on INL property. The proposed action surveys and marks with signs about 33 miles along the INL Site northeast corner boundary to prevent encroachment. A subcontractor will complete the surveys and stake the property boundary. Project activities also include the following:

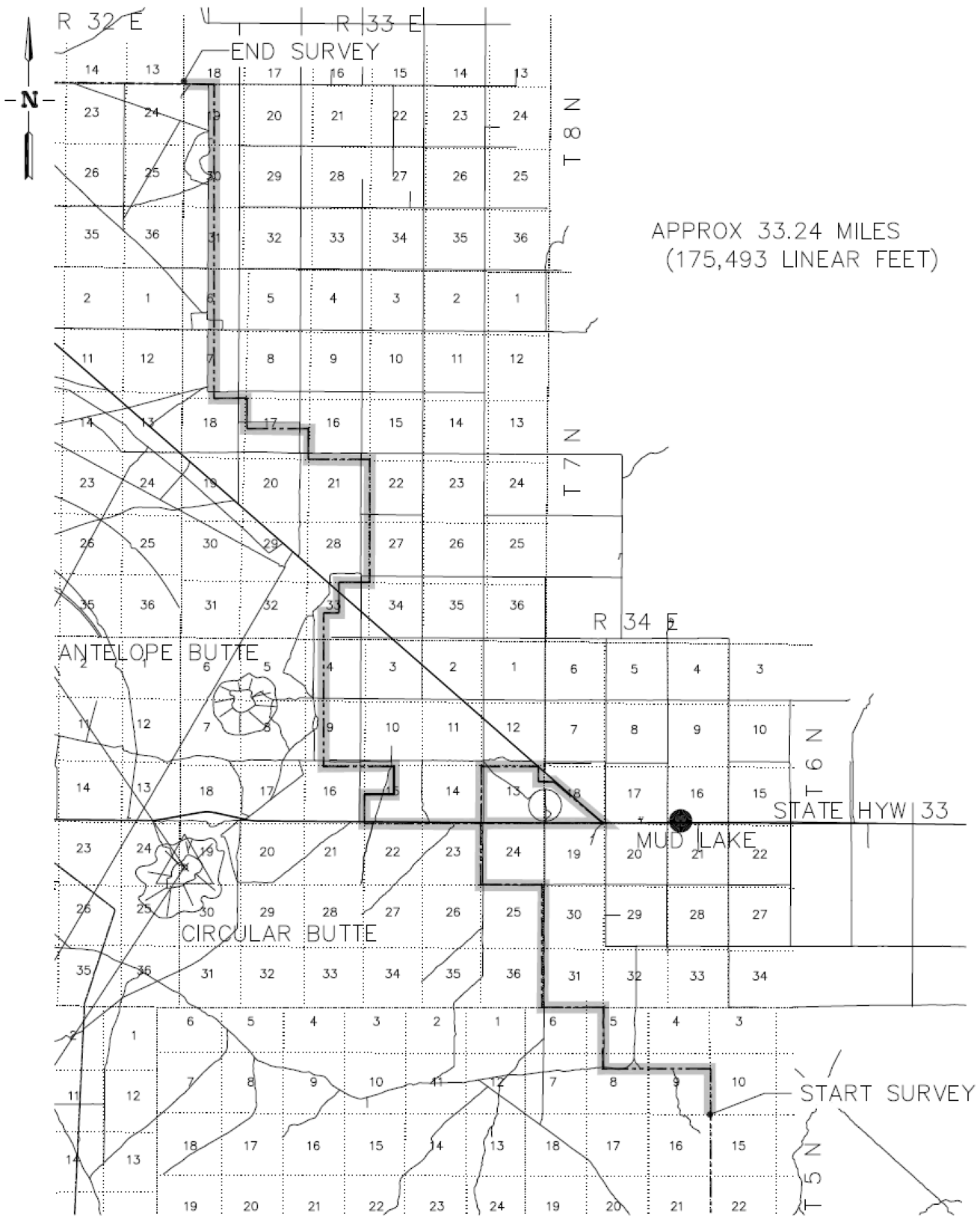
1. Identifying section corners per State of Idaho requirements
2. Retracing the staked boundary and identifying locations for new boundary signs
3. Prepare legal documents required by Idaho law.

Figure 1 shows the boundary to be surveyed.

Figure 1. Survey location on the INL Site northeast boundary.

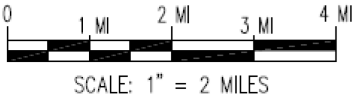
DOE-ID NEPA CX DETERMINATION
Idaho National Laboratory

CX Posting No.: DOE-ID-INL-20-002



APPROX 33.24 MILES
(175,493 LINEAR FEET)

NORTHEAST CORNER
INL SITE PLAN



DOE-ID NEPA CX DETERMINATION

Idaho National Laboratory

SECTION C. Environmental Aspects or Potential Sources of Impact:

Air Emissions

The proposed action has the potential to generate fugitive dust and vehicle/equipment emissions, but vehicle/equipment emissions would be below reportable levels.

Disturbing Cultural or Biological Resources

Soil disturbing activities have the potential to impact cultural resources.

Impacts to biological resources (e.g., vegetation, birds, nests, leks) have the potential to occur during project activities.

Generating and Managing Waste

Project activities have the potential to generate general construction waste such as scrap metal, signposts, wooden stakes, ribbon, empty marking paint cans, etc.

Releasing Contaminants

Chemicals will be used and will be submitted to chemical inventory lists with associated Safety Data Sheets (SDSs) for approval prior to use. The Facility Chemical Coordinator will enter these chemicals into the INL Chemical Management Database. All chemicals will be managed in accordance with laboratory procedures. When dispositioning surplus chemicals, project personnel must contact the facility Chemical Coordinator for disposition instructions.

Although not anticipated, there is a potential for spills when using chemicals or fueling equipment. In the event of a spill, notify facility environmental staff. If environmental staff cannot be contacted, report the release to the Spill Notification Team (208-241-6400). Clean up the spill and turn over spill cleanup materials to WGS.

Survey areas are within the low-level hazard area for unexploded ordnance (UXO) within the ORD-03 CERCLA site.

Using, Reusing, and Conserving Natural Resources

Project personnel would use every opportunity to recycle, reuse, and recover materials and divert waste from the landfill when possible.

SECTION D. Determine Recommended Level of Environmental Review, Identify Reference(s), and State Justification: Identify the applicable categorical exclusion from 10 Code of Federal Regulation (CFR) 1021, Appendix B, give the appropriate justification, and the approval date.

For Categorical Exclusions (CXs), the proposed action must not: (1) threaten a violation of applicable statutory, regulatory, or permit requirements for environmental, safety, and health, or similar requirements of Department of Energy (DOE) or Executive Orders; (2) require siting and construction or major expansion of waste storage, disposal, recovery, or treatment or facilities; (3) disturb hazardous substances, pollutants, contaminants, or Comprehensive Environmental Response, Compensation, and Liability Act (CERCLA)-excluded petroleum and natural gas products that pre-exist in the environment such that there would be uncontrolled or unpermitted releases; (4) have the potential to cause significant impacts on environmentally sensitive resources (see 10 CFR 1021). In addition, no extraordinary circumstances related to the proposal exist that would affect the significance of the action. In addition, the action is not "connected" to other action actions (40 CFR 1508.25(a)(1)) and is not related to other actions with individually insignificant but cumulatively significant impacts (40 CFR 1608.27(b)(7)).

References: 10 CFR 1021, Appendix B to Subpart D, items B1.11 "Fencing" and B3.1 "Site characterization and environmental monitoring."

Justification: Project activities described in this EC are consistent with 10 CFR 1021, Appendix B to Subpart D, item B1.11, "Installation of fencing, including, but not limited to border marking, that would not have the potential to significantly impede wildlife population movement (including migration) or surface water flow;" and "Site characterization and environmental monitoring (including, but not limited to, siting, construction, modification, operation, and dismantlement and removal or otherwise proper closure (such as of a well) of characterization and monitoring devices, and siting, construction, and associated operation of a small-scale laboratory building or renovation of a room in an existing building for sample analysis). Such activities would be designed in conformance with applicable requirements and use best management practices to limit the potential effects of any resultant ground disturbance. Covered activities include, but are not limited to, site characterization and environmental monitoring under CERCLA and RCRA. (This class of actions excludes activities in aquatic environments. See B3.16 of this appendix for such activities.) Specific activities include, but are not limited to:

DOE-ID NEPA CX DETERMINATION
Idaho National Laboratory

- a. Geological, geophysical (such as gravity, magnetic, electrical, seismic, radar, and engineering surveys and mapping, and the establishment of survey marks. Seismic techniques would not include large-scale reflection or refraction testing;
- b. Installation and operation of field instruments (such as stream-gauging stations or flow-measuring devices, telemetry systems, geochemical monitoring tools, and geophysical exploration tools);
- c. Drilling of wells for sampling or monitoring of groundwater or the vadose (unsaturated) zone, well logging, and installation of water-level recording devices in wells;
- d. Aquifer and underground reservoir response testing; (e) Installation and operation of ambient air monitoring equipment;
- e. Sampling and characterization of water, soil, rock, or contaminants (such as drilling using truck- or mobile-scale equipment, and modification, use, and plugging of boreholes);
- f. Sampling and characterization of water effluents, air emissions, or solid waste streams;
- g. Installation and operation of meteorological towers and associated activities (such as assessment of potential wind energy resources);
- h. Sampling of flora or fauna; and
- i. Archeological, historic, and cultural resource identification in compliance with 36 CFR part 800 and 43 CFR part 7."

Is the project funded by the American Recovery and Reinvestment Act of 2009 (Recovery Act) Yes No

Approved by Jason Sturm, DOE-ID NEPA Compliance Officer on: 01/28/2020