

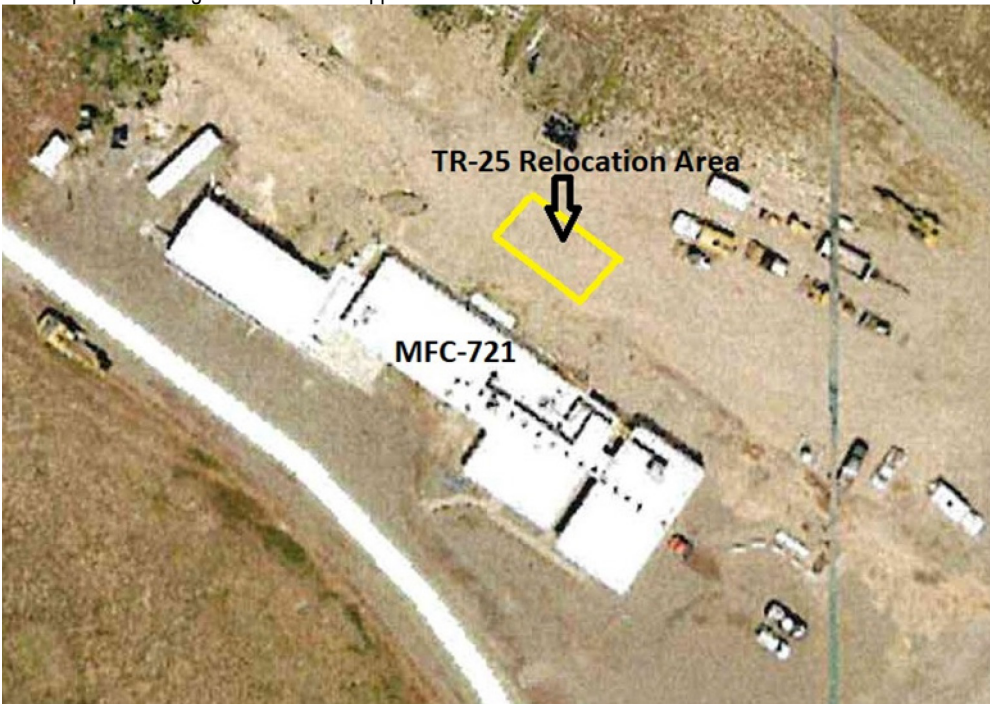
DOE-ID NEPA CX DETERMINATION Idaho National Laboratory

SECTION A. Project Title: Relocation of Materials and Fuels Complex Trailer (TR-25)

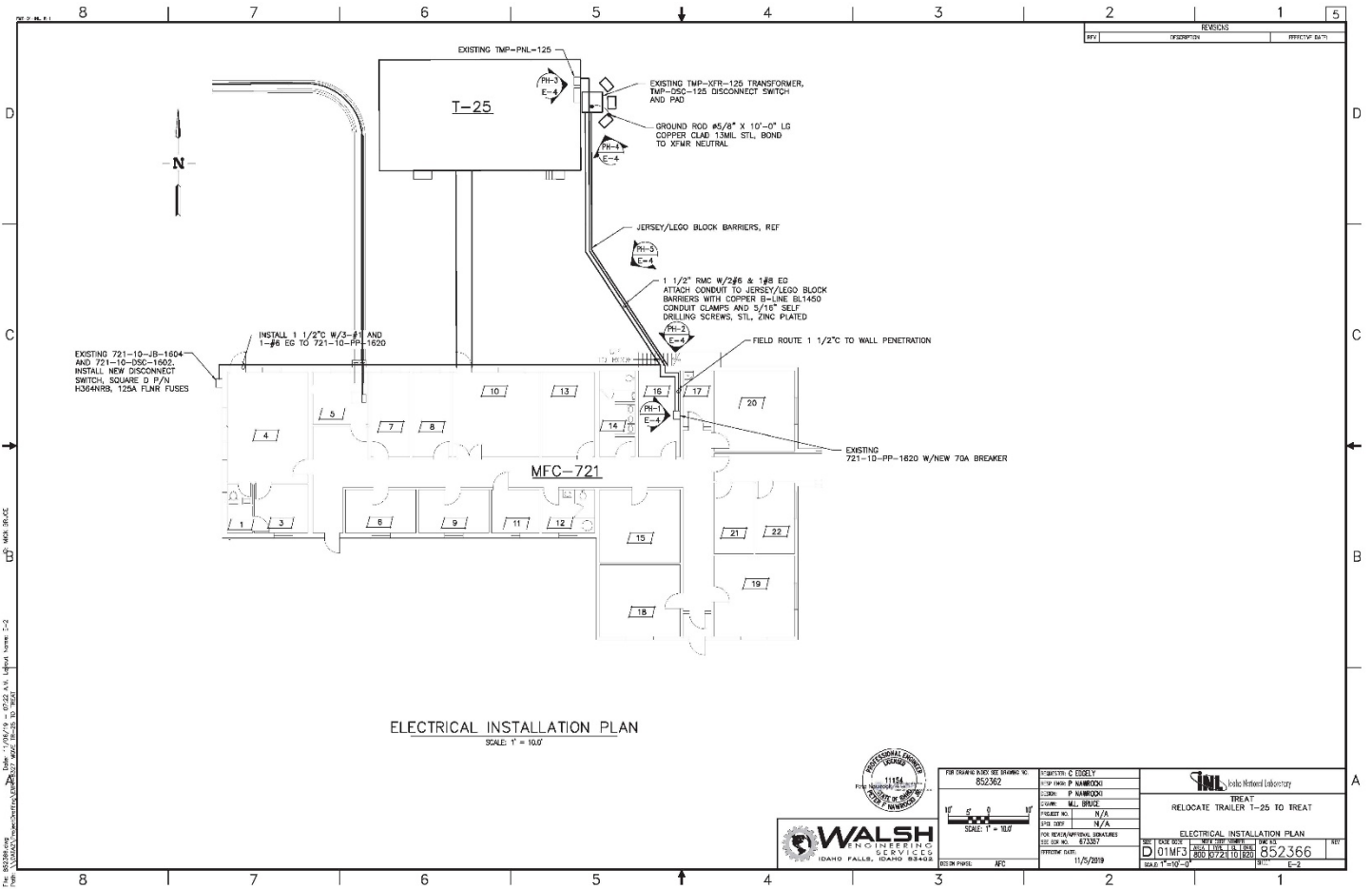
SECTION B. Project Description and Purpose:

Fluor Idaho transferred the lease for TR-25 at the Materials and Fuels Complex (MFC) to Idaho National Laboratory (INL). The trailer is located inside the fence area at MFC, and INL needs to relocate TR-25 to the TREAT control room area, adjacent to MFC-721. The trailer will be used for additional office space to support TREAT operations. INL will not connect the trailer to sewer or water. INL will supply voice, data, and electrical power from MFC-721 through a conduit running about 55' to T-25. The conduit will sit above ground and run on the top of concrete blocks. The project also includes a sidewalk from MFC-721 to T-25 and installs concrete landings for two stair & awning sets. A small culvert under the sidewalk will maintain drainage. The proposed action requires grading and filling the 5" slope variation at the location to reduce the variation to 2". INL will locate the trailer in a previously disturbed area.

The map and drawing below show the approximate relocation area for TR-25 to the northeast of MFC-721.



DOE-ID NEPA CX DETERMINATION Idaho National Laboratory



SECTION C. Environmental Aspects or Potential Sources of Impact:

Air Emissions

Project activities have the potential to generate fugitive dust.
Emissions from machinery and equipment exhaust are expected.

Disturbing Cultural or Biological Resources

Project activities will take place in a previously disturbed area.

Generating and Managing Waste

Project activities have the potential to generate industrial waste such as boxes, wiring, paper, insulation, and some metals (wire, conduit, etc.).

DOE-ID NEPA CX DETERMINATION

Idaho National Laboratory

Releasing Contaminants

Typical construction chemicals such as fuels, lubricants, adhesives, paints, concrete, concrete cure, asphalt, refrigerants, etc., will be used and will be submitted to chemical inventory lists with associated Safety Data Sheets (SDSs) for approval in the vendor data system prior to use. The facility Chemical Coordinator will enter these chemicals into the INL Chemical Management Database. All chemicals will be managed in accordance with laboratory procedures. When dispositioning surplus chemicals, project personnel must contact the facility Chemical Coordinator for disposition instructions.

Although not anticipated, there is a potential for spills when using chemicals or fueling equipment. In the event of a spill, notify facility environmental staff. If the environmental staff cannot be contacted, report the release to the Spill Notification Team (208-241-6400). Clean up the spill and turn over spill cleanup materials to Waste Generator Services.

Using, Reusing, and Conserving Natural Resources

Project personnel would use every opportunity to recycle, reuse, and recover materials and divert waste from the landfill when possible.

SECTION D. Determine Recommended Level of Environmental Review, Identify Reference(s), and State Justification: Identify the applicable categorical exclusion from 10 Code of Federal Regulation (CFR) 1021, Appendix B, give the appropriate justification, and the approval date.

For Categorical Exclusions (CXs), the proposed action must not: (1) threaten a violation of applicable statutory, regulatory, or permit requirements for environmental, safety, and health, or similar requirements of Department of Energy (DOE) or Executive Orders; (2) require siting and construction or major expansion of waste storage, disposal, recovery, or treatment or facilities; (3) disturb hazardous substances, pollutants, contaminants, or Comprehensive Environmental Response, Compensation, and Liability Act (CERCLA)-excluded petroleum and natural gas products that pre-exist in the environment such that there would be uncontrolled or unpermitted releases; (4) have the potential to cause significant impacts on environmentally sensitive resources (see 10 CFR 1021). In addition, no extraordinary circumstances related to the proposal exist that would affect the significance of the action. In addition, the action is not "connected" to other action actions (40 CFR 1508.25(a)(1) and is not related to other actions with individually insignificant but cumulatively significant impacts (40 CFR 1608.27(b)(7)).

References: 10 CFR 1021, Appendix B to Subpart D, item B1.24 "Property Transfers" and B1.15 "Support buildings."

Justification: B1.15 "Siting, construction or modification, and operation of support buildings and support structures (including, but not limited to, trailers and prefabricated and modular buildings) within or contiguous to an already developed area (where active utilities and currently used roads are readily accessible). Covered support buildings and structures include, but are not limited to, those for office purposes; parking; cafeteria services; education and training; visitor reception; computer and data processing services; health services or recreation activities; routine maintenance activities; storage of supplies and equipment for administrative services and routine maintenance activities; security (such as security posts); fire protection; small-scale fabrication (such as machine shop activities), assembly, and testing of non-nuclear equipment or components; and similar support purposes, but exclude facilities for nuclear weapons activities and waste storage activities covered in B1.10, B1.29, B1.35, B2.6, B6.2, B6.5, B6.6, and B6.10 of this appendix."

Is the project funded by the American Recovery and Reinvestment Act of 2009 (Recovery Act) Yes No

Approved by Jason Sturm, DOE-ID NEPA Compliance Officer on: 11/18/2019