

DOE-ID NEPA CX DETERMINATION Idaho National Laboratory

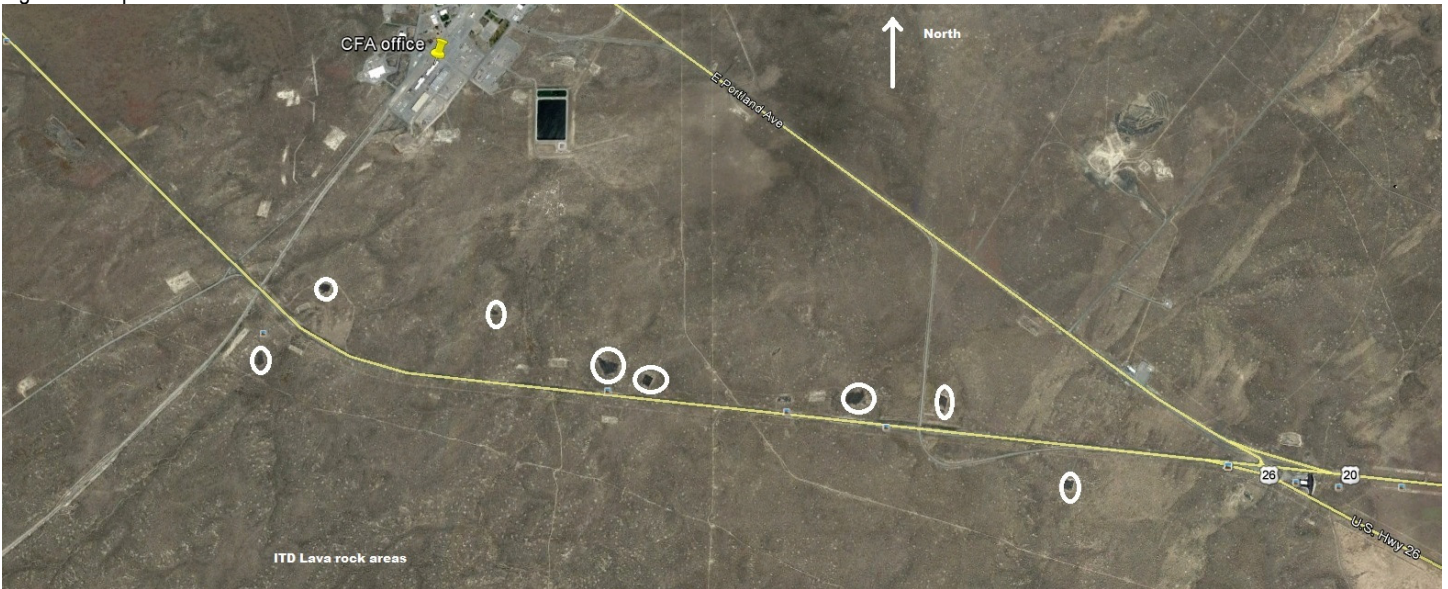
SECTION A. Project Title: Lava Rock Removal

SECTION B. Project Description and Purpose:

Idaho National Laboratory (INL) Sitewide Facility & Operations (SFO) is responsible for road maintenance activities on INL Site managed roadways. The Idaho transportation Department (ITD) manages and performs maintenance and safety improvements on public roads crossing the INL Site. Both the SFO and ITD use lava rocks retrieved from INL Site locations for maintenance related activities such as controlling run-off and drifting sand and snow. The stock of lava rocks used by the SFO and ITD are low and need to be replenished. The proposed action retrieves lava rocks from INL Site locations to meet the needs of the SFO and ITD.

Lava rocks will be gathered from the sources shown in Figure 1.

Figure 1. Proposed locations for lava rock removal



The proposed action loads rocks with a backhoe and hauls the rocks with a dump truck to previously disturbed stockpile locations or to specific locations where the rocks are needed for maintenance. Project activities do not include excavating, drilling, or grading. However, some retrieval locations have institutional controls under the Comprehensive Environmental Response, Compensation, and Liability Act (CERCLA). CERCLA sites in the project area are shown in Figure 2.

Figure 2. CERCLA Sites.



**DOE-ID NEPA CX DETERMINATION
Idaho National Laboratory**

SECTION C. Environmental Aspects or Potential Sources of Impact:

Air Emissions

Fugitive dust may be generated during excavation and grading activities.

Emissions from machinery and equipment exhaust are expected.

Disturbing Cultural or Biological Resources

Project activities have the potential to remove topsoil and vegetation, compact soils, and damage soil structure. Indirect effects could include soil erosion and reduced soil productivity. Erosion of disturbed soils would be greatest during and immediately after ground disturbance. Afterwards, soils would stabilize as they settle and as vegetation becomes reestablished. Reseeding of all disturbed areas would reduce erosion.

Project activities have the potential disturb biological and cultural resources.

Generating and Managing Waste

The proposed action has the potential to generate common office trash.

Releasing Contaminants

Although not anticipated, there is a potential for spills when operating or fueling equipment. In the event of a spill, notify facility PEL. If the PEL cannot be contacted, report the release to the Spill Notification Team (208-241-6400). Clean up the spill and turn over spill cleanup materials to WGS.

The project has the potential to disturb known Comprehensive Environmental Response, Compensation, and Liability Act (CERCLA) sites.

Using, Reusing, and Conserving Natural Resources

Fuel will be used to access and return from source sites.

SECTION D. Determine Recommended Level of Environmental Review, Identify Reference(s), and State Justification: Identify the applicable categorical exclusion from 10 Code of Federal Regulation (CFR) 1021, Appendix B, give the appropriate justification, and the approval date.

For Categorical Exclusions (CXs), the proposed action must not: (1) threaten a violation of applicable statutory, regulatory, or permit requirements for environmental, safety, and health, or similar requirements of Department of Energy (DOE) or Executive Orders; (2) require siting and construction or major expansion of waste storage, disposal, recovery, or treatment or facilities; (3) disturb hazardous substances, pollutants, contaminants, or Comprehensive Environmental Response, Compensation, and Liability Act (CERCLA)-excluded petroleum and natural gas products that pre-exist in the environment such that there would be uncontrolled or unpermitted releases; (4) have the potential to cause significant impacts on environmentally sensitive resources (see 10 CFR 1021). In addition, no extraordinary circumstances related to the proposal exist that would affect the significance of the action. In addition, the action is not "connected" to other action actions (40 CFR 1508.25(a)(1) and is not related to other actions with individually insignificant but cumulatively significant impacts (40 CFR 1608.27(b)(7)).

References: 10 CFR 1021, Appendix B to subpart D, items B1.24 "Property transfers" and B1.30 "Transfer actions."

Justification: Project activities described in this EC are consistent with the following items in 10 CFR 1021, Appendix B to Subpart D:

B1.24 "Transfer, lease, disposition, or acquisition of interests in personal property (including, but not limited to, equipment and materials) or real property (including, but not limited to, permanent structures and land), provided that under reasonably foreseeable uses (1) there would be no potential for release of substances at a level, or in a form, that could pose a threat to public health or the environment and (2) the covered actions would not have the potential to cause a significant change in impacts from before the transfer, lease, disposition, or acquisition of interests;" and

B1.30 "Transfer actions, in which the predominant activity is transportation, provided that (1) the receipt and storage capacity and management capability for the amount and type of materials, equipment, or waste to be moved already exists at the receiving site and (2) all necessary facilities and operations at the receiving site are already permitted, licensed, or approved, as appropriate. Such transfers are not regularly scheduled as part of ongoing routine operations."

Is the project funded by the American Recovery and Reinvestment Act of 2009 (Recovery Act) Yes No

Approved by Jason Sturm, DOE-ID NEPA Compliance Officer on: 7/18/2018