

# DOE-ID NEPA CX DETERMINATION Idaho National Laboratory

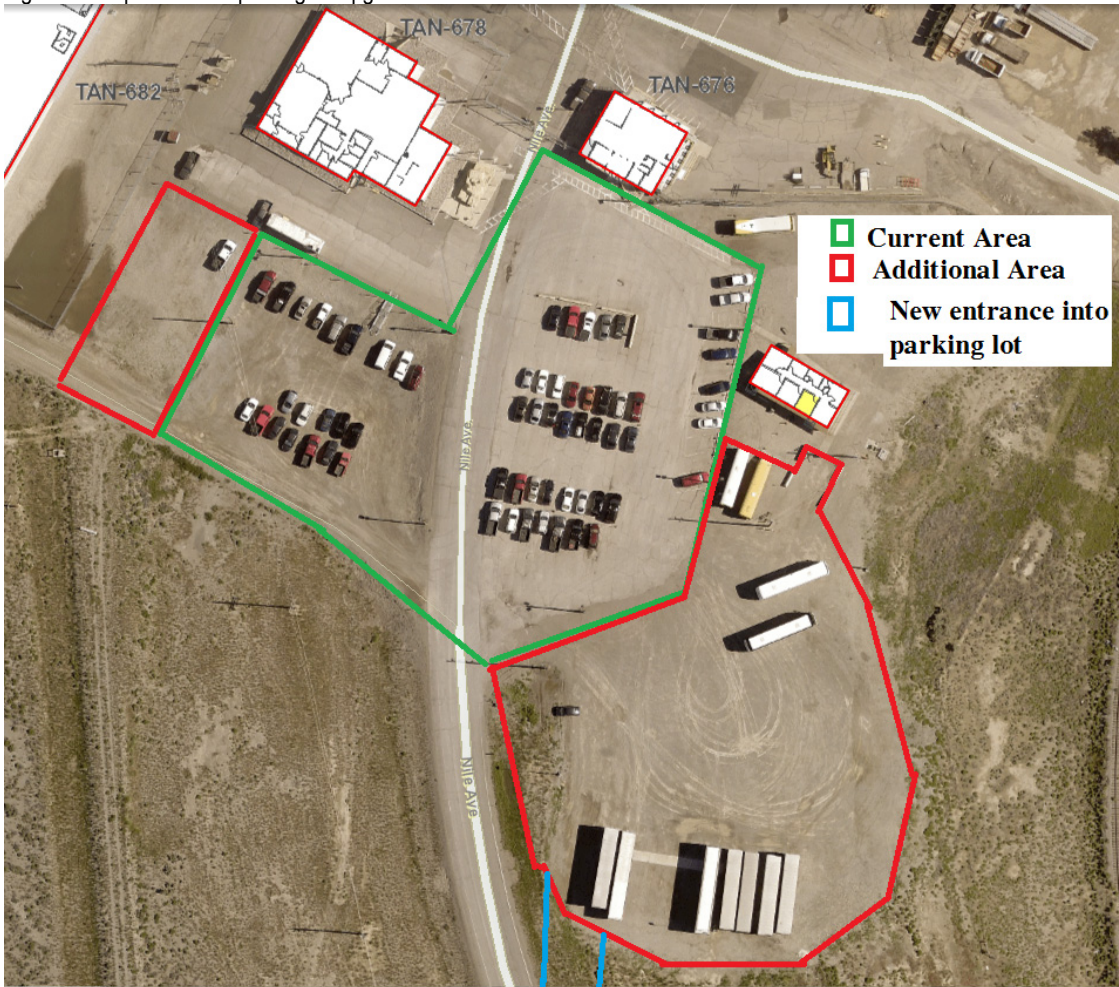
## SECTION A. Project Title: SMC Parking Lot Repaving

## SECTION B. Project Description and Purpose:

The Specific Manufacturing Capability (SMC) at Idaho National Laboratory (INL) has identified the need to upgrade and expand the parking area. The proposed action removes asphalt where needed, regrades, backfills, and places new asphalt in the green area shown in Figure 1. The project also regrades, backfills, and places new asphalt in the areas outlined in red in Figure 1, which are not paved at present. The proposed action originally anticipated construction of a new entrance into the parking lot from Nile Ave (see Figure 1), but the new entrance is no longer part of the project scope.

The SMC area is excluded from the stormwater corridor. This environmental checklist (EC) does not cover development or disturbance, including construction of laydown or turnaround areas, in areas outside of those shown in Figure 1.

Figure 1. Proposed SMC parking lot upgrades



## SECTION C. Environmental Aspects or Potential Sources of Impact:

### Air Emissions

Project activities have the potential to generate fugitive dust.

### Discharging to Surface-, Storm-, or Ground Water

Activities addressed by this EC have the potential to impact waters of the United States (U.S.) or groundwater through conduct of the following:

- Managing storm water discharges

### Disturbing Cultural or Biological Resources

Activities included in this EC have the potential to disturb cultural or biological resources as follows:

# DOE-ID NEPA CX DETERMINATION

## Idaho National Laboratory

- Management of migratory birds and bird nests on the INL Site.

### Generating and Managing Waste

Project activities have the potential to generate waste from conducting the following activities:

- Other routine maintenance activities that generate waste

### Releasing Contaminants

Activities addressed by this EC have the potential to release contaminants through the following:

- Acquiring, using, storing and dispositioning chemicals
- Managing and dispositioning excess property and materials
- Reporting and cleaning up spills and releases
- Disturbing CERCLA sites.

### Using, Reusing, and Conserving Natural Resources

Activities addressed by this EC have the potential for use, reuse and conservation of natural resources related to the following:

- Consuming potable, industrial or irrigation water
- Generating storm water
- Generating landfill waste or construction and demolition wastes
- Generating recyclable materials
- Engaging in sustainable acquisition practices.

**SECTION D. Determine Recommended Level of Environmental Review, Identify Reference(s), and State Justification:** Identify the applicable categorical exclusion from 10 Code of Federal Regulation (CFR) 1021, Appendix B, give the appropriate justification, and the approval date.

For Categorical Exclusions (CXs), the proposed action must not: (1) threaten a violation of applicable statutory, regulatory, or permit requirements for environmental, safety, and health, or similar requirements of Department of Energy (DOE) or Executive Orders; (2) require siting and construction or major expansion of waste storage, disposal, recovery, or treatment or facilities; (3) disturb hazardous substances, pollutants, contaminants, or Comprehensive Environmental Response, Compensation, and Liability Act (CERCLA)-excluded petroleum and natural gas products that pre-exist in the environment such that there would be uncontrolled or unpermitted releases; (4) have the potential to cause significant impacts on environmentally sensitive resources (see 10 CFR 1021). In addition, no extraordinary circumstances related to the proposal exist that would affect the significance of the action. In addition, the action is not "connected" to other action actions (40 CFR 1508.25(a)(1) and is not related to other actions with individually insignificant but cumulatively significant impacts (40 CFR 1608.27(b)(7)).

**References:** 10 CFR 1021, Appendix B to Subpart D, item 1.15 "Support buildings."

**Justification:** Project activities described in this EC are consistent with 10 CFR 1021, Appendix B to Subpart D, item B1.15 "Siting, construction or modification, and operation of support buildings and support structures (including, but not limited to, trailers and prefabricated and modular buildings) within or contiguous to an already developed area (where active utilities and currently used roads are readily accessible). Covered support buildings and structures include, but are not limited to, those for office purposes; parking; cafeteria services; education and training; visitor reception; computer and data processing services; health services or recreation activities; routine maintenance activities; storage of supplies and equipment for administrative services and routine maintenance activities; security (such as security posts); fire protection; small-scale fabrication (such as machine shop activities), assembly, and testing of non-nuclear equipment or components; and similar support purposes, but exclude facilities for nuclear weapons activities and waste storage activities covered in B1.10, B1.29, B1.35, B2.6, B6.2, B6.5, B6.6, and B6.10 of this appendix."

Is the project funded by the American Recovery and Reinvestment Act of 2009 (Recovery Act)  Yes  No

Approved by Jason Sturm, DOE-ID NEPA Compliance Officer on: 7/17/18