

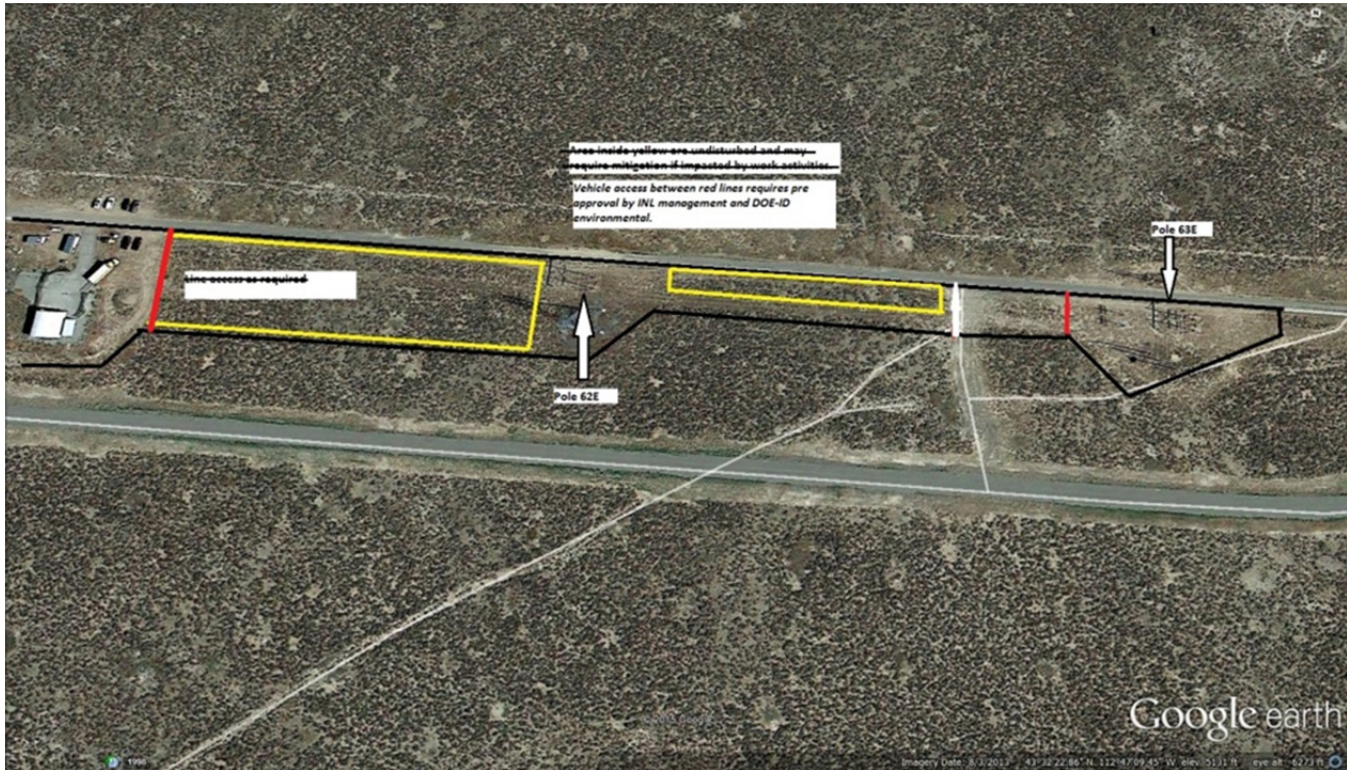
DOE-ID NEPA CX DETERMINATION Idaho National Laboratory

SECTION A. Project Title: Vehicle Access at the Intermediate Measurement Location

SECTION B. Project Description and Purpose:

Environmental checklist (EC) INL-13-017 (OA 5) analyzed the environmental impacts of placing a temporary Intermediate Measurement Location (IML) to support power line testing. Initially, only foot traffic was allowed in this area. The purpose of this EC is to address access controls at the IML. Unrestricted vehicle access is needed at the IML. The proposed action would allow unrestricted vehicle access to the area between the red lines in Figure 1. In addition, the IML is no longer a temporary location and will be used indefinitely for project access.

Figure 1. Unrestricted vehicle access areas



Additionally, the area outlined in black in Figure 2 would also allow unrestricted vehicle access. The areas marked in yellow currently allow overflow parking, but unrestricted vehicle access to the area outline in black would occur under the proposed action.

Figure 2. Additional area with unrestricted vehicle access



Vehicle access to these locations has the potential to impact sagebrush. To maintain Department of Energy's (DOE's) goal to achieve no net loss of sagebrush on the Idaho National Laboratory (INL) Site identified in the Candidate Conservation Agreement for Sagegrouse on the INL Site (CCA), the project must compensate for the lost sagebrush. The project must re-establish sagebrush in acreages equal to or greater than acreages lost by project activities. Re-establishment must occur within the restoration priority areas identified in the CCA. Restoration activities may be coordinated with other sagebrush restoration activities currently being conducted on the INL Site.

SECTION C. Environmental Aspects or Potential Sources of Impact:

Air Emissions

Project activities may generate fugitive dust.

Disturbing Cultural or Biological Resources

Project activities have the potential to disturb cultural and biological resources, including sagebrush.

Generating and Managing Waste

Operations at the IML are expected to generate small amounts of common trash and industrial waste.

Releasing Contaminants

Small amounts of air emissions will be generated.

Using, Reusing, and Conserving Natural Resources

All applicable waste will be diverted from disposal in the landfill when possible.

SECTION D. Determine Recommended Level of Environmental Review, Identify Reference(s), and State Justification: Identify the applicable categorical exclusion from 10 Code of Federal Regulation (CFR) 1021, Appendix B, give the appropriate justification, and the approval date.

For Categorical Exclusions (CXs), the proposed action must not: (1) threaten a violation of applicable statutory, regulatory, or permit requirements for environmental, safety, and health, or similar requirements of Department of Energy (DOE) or Executive Orders; (2)

**DOE-ID NEPA CX DETERMINATION
Idaho National Laboratory**

require siting and construction or major expansion of waste storage, disposal, recovery, or treatment or facilities; (3) disturb hazardous substances, pollutants, contaminants, or Comprehensive Environmental Response, Compensation, and Liability Act (CERCLA)-excluded petroleum and natural gas products that pre-exist in the environment such that there would be uncontrolled or unpermitted releases; (4) have the potential to cause significant impacts on environmentally sensitive resources (see 10 CFR 1021). In addition, no extraordinary circumstances related to the proposal exist that would affect the significance of the action. In addition, the action is not "connected" to other action actions (40 CFR 1508.25(a)(1) and is not related to other actions with individually insignificant but cumulatively significant impacts (40 CFR 1608.27(b)(7)).

References: 10 CFR 1021, Appendix B to Subpart D, item 1.15 "Support buildings."

Justification: Project activities described in this EC are consistent with 10 CFR 1021, Appendix B to Subpart D, item B1.15 "Siting, construction or modification, and operation of support buildings and support structures (including, but not limited to, trailers and prefabricated and modular buildings) within or contiguous to an already developed area (where active utilities and currently used roads are readily accessible). Covered support buildings and structures include, but are not limited to, those for office purposes; parking; cafeteria services; education and training; visitor reception; computer and data processing services; health services or recreation activities; routine maintenance activities; storage of supplies and equipment for administrative services and routine maintenance activities; security (such as security posts); fire protection; small-scale fabrication (such as machine shop activities), assembly, and testing of non-nuclear equipment or components; and similar support purposes, but exclude facilities for nuclear weapons activities and waste storage activities covered in B1.10, B1.29, B1.35, B2.6, B6.2, B6.5, B6.6, and B6.10 of this appendix."

Is the project funded by the American Recovery and Reinvestment Act of 2009 (Recovery Act) Yes No

Approved by Jack Depperschmidt, DOE-ID NEPA Compliance Officer on: 7/21/2016