

DOE-ID NEPA CX DETERMINATION
Idaho National Laboratory

SECTION A. Project Title: Wireless Test Bed (WTB) Main Gate Shelter Complex Non-Emergency Generator Installation

SECTION B. Project Description and Purpose:

The proposed action would provide the Wireless Test Bed program (WTB) with the ability to maintain electrical power to B27-Maingate Shelters #1, #2, and #3 during planned and unplanned power outages. This action includes removal of electrical equipment, installation of an outdoor Tier 4 non-emergency generator and concrete slab, sidewalk demolition and repair, and installation of alternating transfer switch, disconnects, duct banks, conduit, and wire sufficient for maintaining shelter operations.

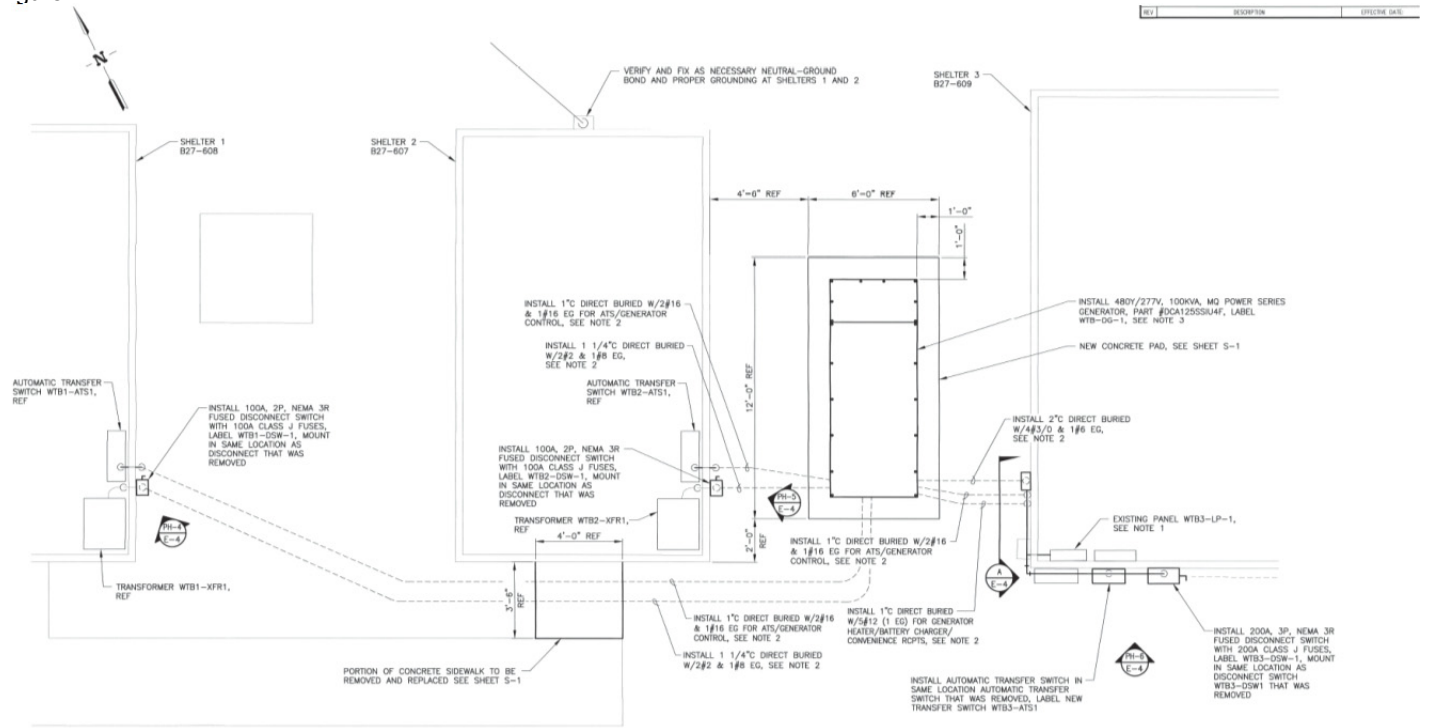
The general location of the work is near the badging building at Gate 1, as shown in Figure 1

Figure 1 - General Work Area



Figure 2 Shows the proposed locations of the new generator, sidewalk work, and ductbank installation between and adjacent to Shelters 1 and 2 (B27-607 and 608)

Figure 2



The generator is expected to be Multiquip WhisperWatt 100 KW, DCA125SSIU4F which meets Tier 4 Final air emissions specifications. The unit is equipped with an enclosed fuel 169-gallon diesel tank. For regulatory purposes, the generator is considered a non-emergency engine.

The work is expected to begin in October 2016 and cost about \$200K.

SECTION C. Environmental Aspects or Potential Sources of Impact:

Air Emissions

Sidewalk demolition and construction work have the potential to generate fugitive dust. Efforts to control fugitive dust must be documented in the project files (date, time, method employed, amount used, etc.).

The Tier 4F non-emergency generator will generate air emissions.

Disturbing Cultural or Biological Resources

The project area has been previously disturbed and is covered with gravel; no impact to biological or cultural resources is expected.

Generating and Managing Waste

Industrial waste including concrete and rebar demolition debris, scrap metal, and electronic components could be generated.

Releasing Contaminants

Construction chemicals such as paint, fuels, lubricants, adhesives, etc., will be used during the project.

Using, Reusing, and Conserving Natural Resources

All applicable waste will be diverted from disposal in the landfill when possible. Project personnel will use every opportunity to recycle, reuse, and recover materials and divert waste from the landfill when possible.

DOE-ID NEPA CX DETERMINATION
Idaho National Laboratory

SECTION F. Determine Recommended Level of Environmental Review, Identify Reference(s), and State Justification: Identify applicable categorical exclusion from 10 Code of Federal Regulation (CFR) 1021, Appendix B, give the appropriate justification, and the approval date.

For Categorical Exclusions (CXs), the proposed action must not: (1) threaten a violation of applicable statutory, regulatory, or permit requirements for environmental, safety, and health, or similar requirements of Department of Energy (DOE) or Executive Orders; (2) require siting and construction or major expansion of waste storage, disposal, recovery, or treatment or facilities; (3) disturb hazardous substances, pollutants, contaminants, or Comprehensive Environmental Response, Compensation, and Liability Act (CERCLA)-excluded petroleum and natural gas products that pre-exist in the environment such that there would be uncontrolled or unpermitted releases; (4) have the potential to cause significant impacts on environmentally sensitive resources (see 10 CFR 1021). In addition, no extraordinary circumstances related to the proposal exist that would affect the significance of the action. In addition, the action is not "connected" to other action actions (40 CFR 1508.25(a)(1)) and is not related to other actions with individually insignificant but cumulatively significant impacts (40 CFR 1608.27(b)(7)).

References: 10 CFR 1021, Appendix B to Subpart D, B1.31 "Installation or relocation of machinery and equipment."

Justification: The proposed action is consistent with categorical exclusion B1.31 "Installation or relocation and operation of machinery and equipment (including, but not limited to, laboratory equipment, electronic hardware, manufacturing machinery, maintenance equipment, and health and safety equipment), provided that the uses of the installed or relocated items are consistent with the general missions of the receiving structure. Covered actions include modifications to an existing building, within or contiguous to a previously disturbed or developed area, that are necessary for equipment installation and relocation. Such modifications would not appreciably increase the footprint or height of the existing building or have the potential to cause significant changes to the type and magnitude of environmental impacts."

Is the project funded by the American Recovery and Reinvestment Act of 2009 (Recovery Act) Yes No

Approved by Jack Depperschmidt, DOE-ID NEPA Compliance Officer on: 6/27/2016