

DOE-ID NEPA CX DETERMINATION Idaho National Laboratory

SECTION A. Project Title: TREAT O&M Modular Office Building

SECTION B. Project Description and Purpose:

Due to office space constraints at TREAT, there is an immediate critical need for temporary modular space. Existing TREAT office space is at maximum capacity and presents a sub-optimal working environment for operation staff, engineers, and researchers. Multiple people have been placed in offices designed for one person or placed in rooms designated for instrumentation. This project will provide temporary modular office space which shall include site preparation, general facility infrastructure, HVAC, electrical, data, roof integrity, ingress/egress, flooring integrity, and items included in the building envelope. The modular office will be sized for up to thirty occupants. The modular building will contain offices, cubical spaces, training room, breakroom, ADA restrooms, a shower, and an IT closet. The modular building will be sited on a gravel pad foundation. Utilities shall include water, power, telecommunications, and a sanitary sewer septic system. Options for the septic system include an at-grade soil absorption system and capping fill system based on depth to bedrock. See site plan for location and routing of utilities. Vegetation disturbance is approximately 28,600 sq ft, or 0.66 acre.

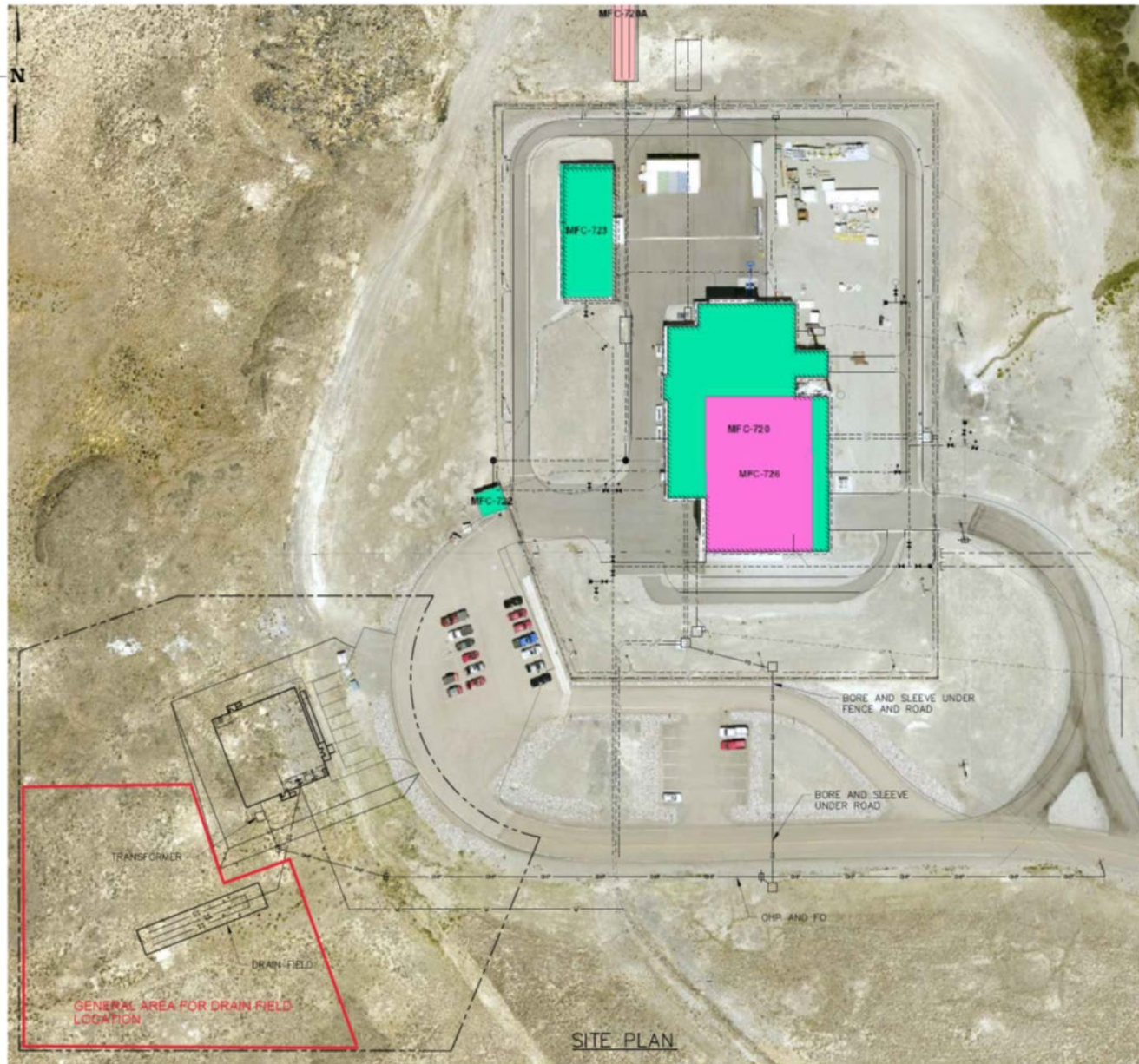
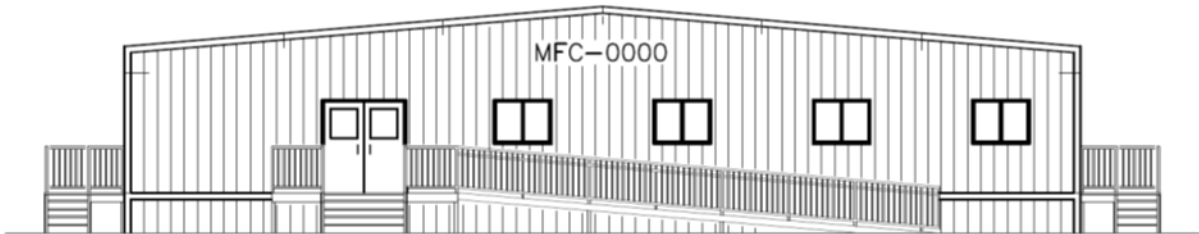


Figure 1. General location of the office building in relation to the existing infrastructure at TREAT.

DOE-ID NEPA CX DETERMINATION
Idaho National Laboratory



LOOKING WEST
ELEVATION
 $3/16" = 1'-0"$

Figure 2. Preliminary visual of building design.

DOE-ID NEPA CX DETERMINATION
Idaho National Laboratory

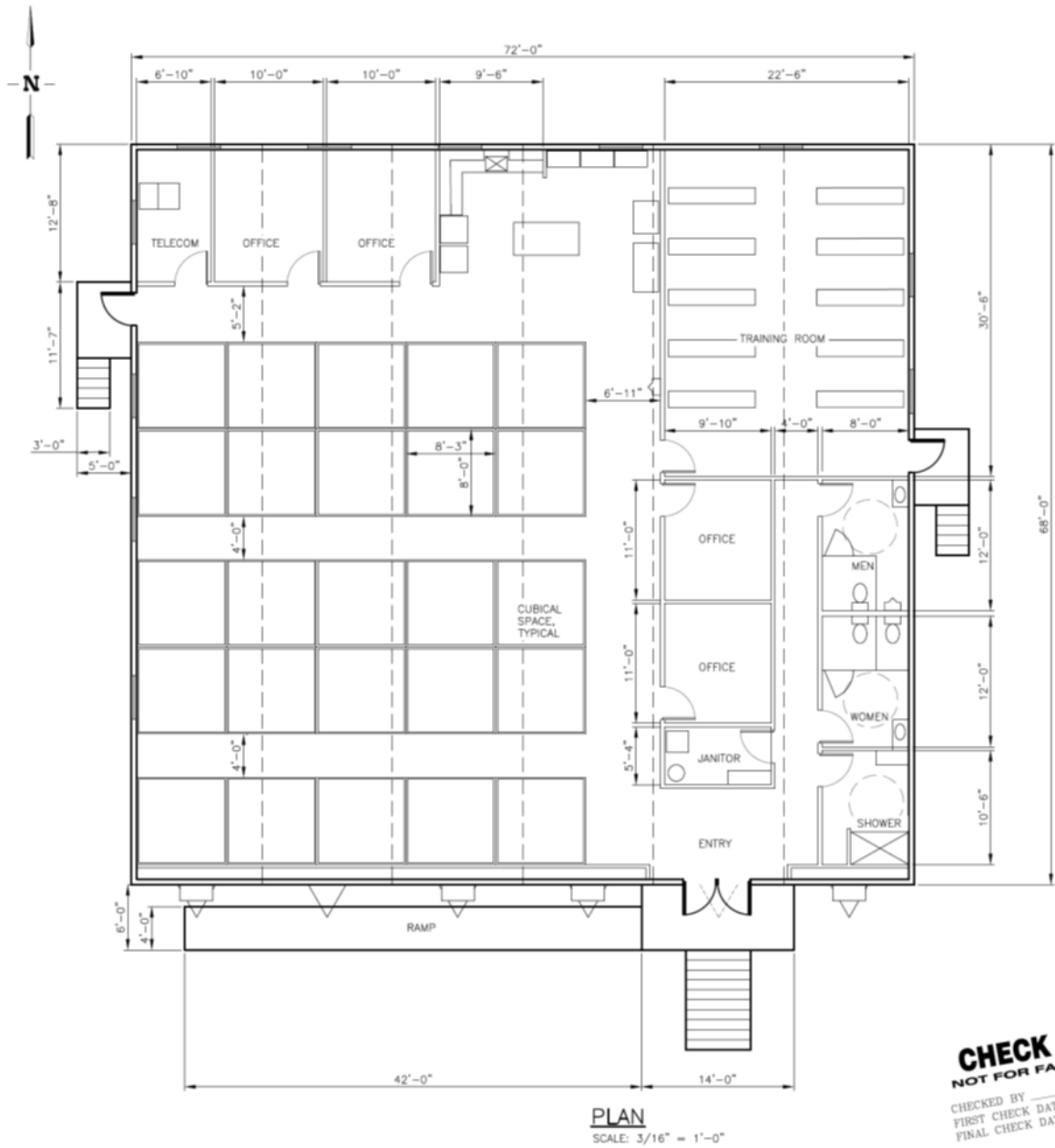


Figure 3. Preliminary interior design and layout.

**DOE-ID NEPA CX DETERMINATION
Idaho National Laboratory**

SECTION C. Environmental Aspects or Potential Sources of Impact:

Air Emissions

Project construction activities may involve the use of portable generators and equipment used by subcontractors. In addition, construction activities have the potential to create fugitive dust that may require dust suppression by water or other means.

Discharging to Surface-, Storm-, or Ground Water

The project will be constructing a new septic system that will discharge to the ground.

Disturbing Cultural or Biological Resources

There is the potential for this work to impact vegetation and for project personnel to interact with various wildlife species. A Biological Resource Review will be arranged within two weeks of the initiation of any activities that might disturb soil or vegetation as well as following project activities. A nesting bird survey is included with the Biological Resource Review for actions occurring between April 1 and October 1 per compliance with the Migratory Bird Treaty Act. Excavation and grading activities will disturb soil and vegetation in previously undisturbed areas, which may affect cultural and biological resources. The new building may have an effect on the "built environment" (nearby buildings). A cultural Resource Review will be completed for this project. Please refer to BEA-22-59.

Generating and Managing Waste

Construction activities may result in the generation of small amounts of hazardous waste in the form of adhesives, paints, solvents, waste concrete, PVC or metal piping scrap, scrap wood, scrap wire, paper waste, packaging material, etc.

Releasing Contaminants

When chemicals are used, there is the potential for chemicals to be spilled it air or soil.

Using, Reusing, and Conserving Natural Resources

Recycled materials will be used to the greatest extent practicable in the selection of materials. All materials will be reused and/or recycled where economically practicable. All applicable waste will be diverted from disposal in the landfill where conditions allow.

SECTION D. Determine Recommended Level of Environmental Review, Identify Reference(s), and State Justification: Identify the applicable categorical exclusion from 10 Code of Federal Regulation (CFR) 1021, Appendix B, give the appropriate justification, and the approval date.

For Categorical Exclusions (CXs), the proposed action must not: (1) threaten a violation of applicable statutory, regulatory, or permit requirements for environmental, safety, and health, or similar requirements of Department of Energy (DOE) or Executive Orders; (2) require siting and construction or major expansion of waste storage, disposal, recovery, or treatment or facilities; (3) disturb hazardous substances, pollutants, contaminants, or Comprehensive Environmental Response, Compensation, and Liability Act (CERCLA)-excluded petroleum and natural gas products that pre-exist in the environment such that there would be uncontrolled or unpermitted releases; (4) have the potential to cause significant impacts on environmentally sensitive resources (see 10 CFR 1021). In addition, no extraordinary circumstances related to the proposal exist that would affect the significance of the action. In addition, the action is not "connected" to other action actions (40 CFR 1508.25(a)(1) and is not related to other actions with individually insignificant but cumulatively significant impacts (40 CFR 1608.27(b)(7)).

References:

10 CFR 1021, Appendix B to Subpart D, item B1.15 "Support buildings

Justification:

Activities are consistent with 10 CFR 1021, Appendix B to Subpart D, item B1.15 "Siting, construction or modification, and operation of support buildings and support structures (including, but not limited to, trailers and prefabricated and modular buildings) within or contiguous to an already developed area (where active utilities and currently used roads are readily accessible). Covered support buildings and structures include, but are not limited to, those for office purposes; parking; cafeteria services; education and training; visitor reception; computer and data processing services; health services or recreation activities; routine maintenance activities; storage of supplies and equipment for administrative services and routine maintenance activities; security (such as security posts); fire protection; small-scale fabrication (such as machine shop activities), assembly, and testing of non-nuclear equipment or components; and similar support purposes, but exclude facilities for nuclear weapons activities and waste storage activities covered in B1.10, B1.29, B1.35, B2.6, B6.2, B6.5, B6.6, and B6.10 of this appendix

Is the project funded by the American Recovery and Reinvestment Act of 2009 (Recovery Act) Yes No

Approved by Jason L. Anderson, DOE-ID NEPA Compliance Officer on: 10/05/2022