

DOE-ID NEPA CX DETERMINATION Idaho National Laboratory

SECTION A. Project Title: SMC Satellite Office

SECTION B. Project Description and Purpose:

The proposed 6,300 square foot SMC Satellite Office would be a new secure office building located in Idaho Falls on the West side of the IRC complex (See Figure 1). The purpose is to provide SMC personnel in-town office space (See Figure 2). It is anticipated that the office space would commonly consist of approximately 20 to 40 personnel. The proposed office building would be a prefabricated modular building consisting of a maximum 10 units (See Figure 3). The building would be landscaped for low maintenance and have adequate drainage and stormwater controls. It is anticipated that the roof will be a white TPO membrane. The outside appearance will match the surrounding building in the IRC complex.

The modular units would be placed on a slab-on-grade foundation. Modular units will be placed using semi-trucks and crane. The building will be serviced by underground utilities (e.g., electricity, communications, water, and sewer) from existing IRC services (See Figure 4). Natural gas will not be installed. This existing gravel road located west of the main IRC campus will be rerouted to enter the IRC parking lot to the north. It is anticipated that no new parking would be needed (See Figure 5).



GPS: 43.51672731686849, -112.03729503335285

Figure. Proposed SMC Office Location in relation to existing buildings at IRC

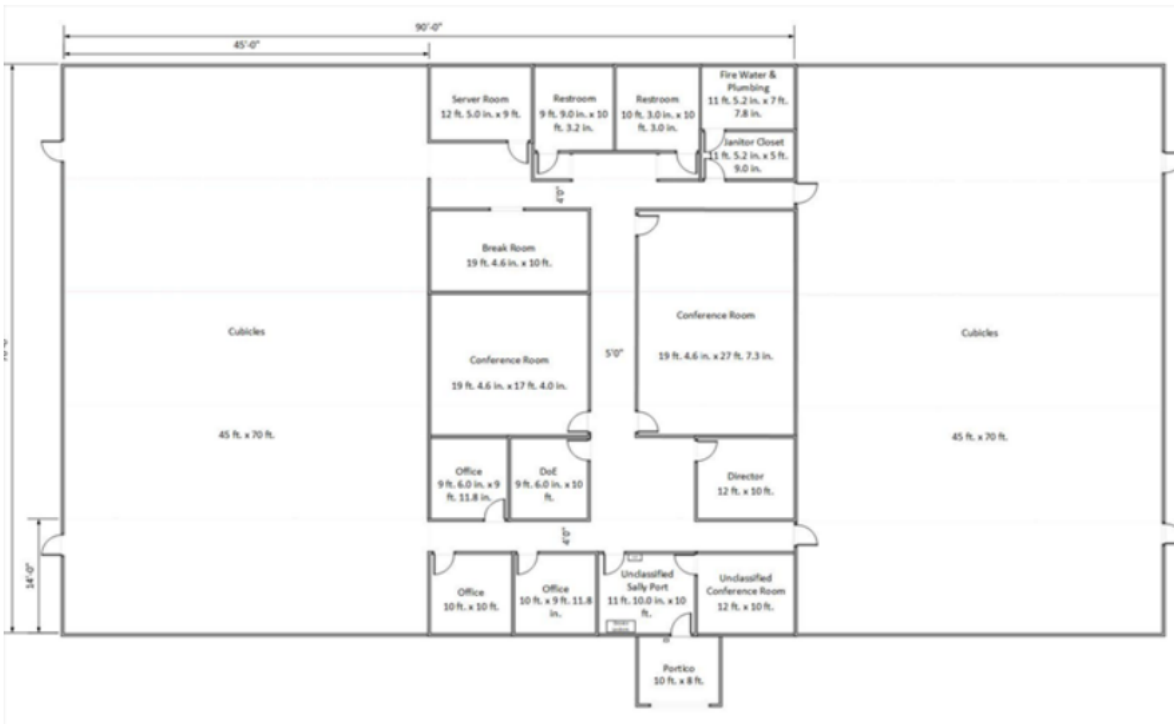


Figure 2. Approximate dimensions of the proposed building

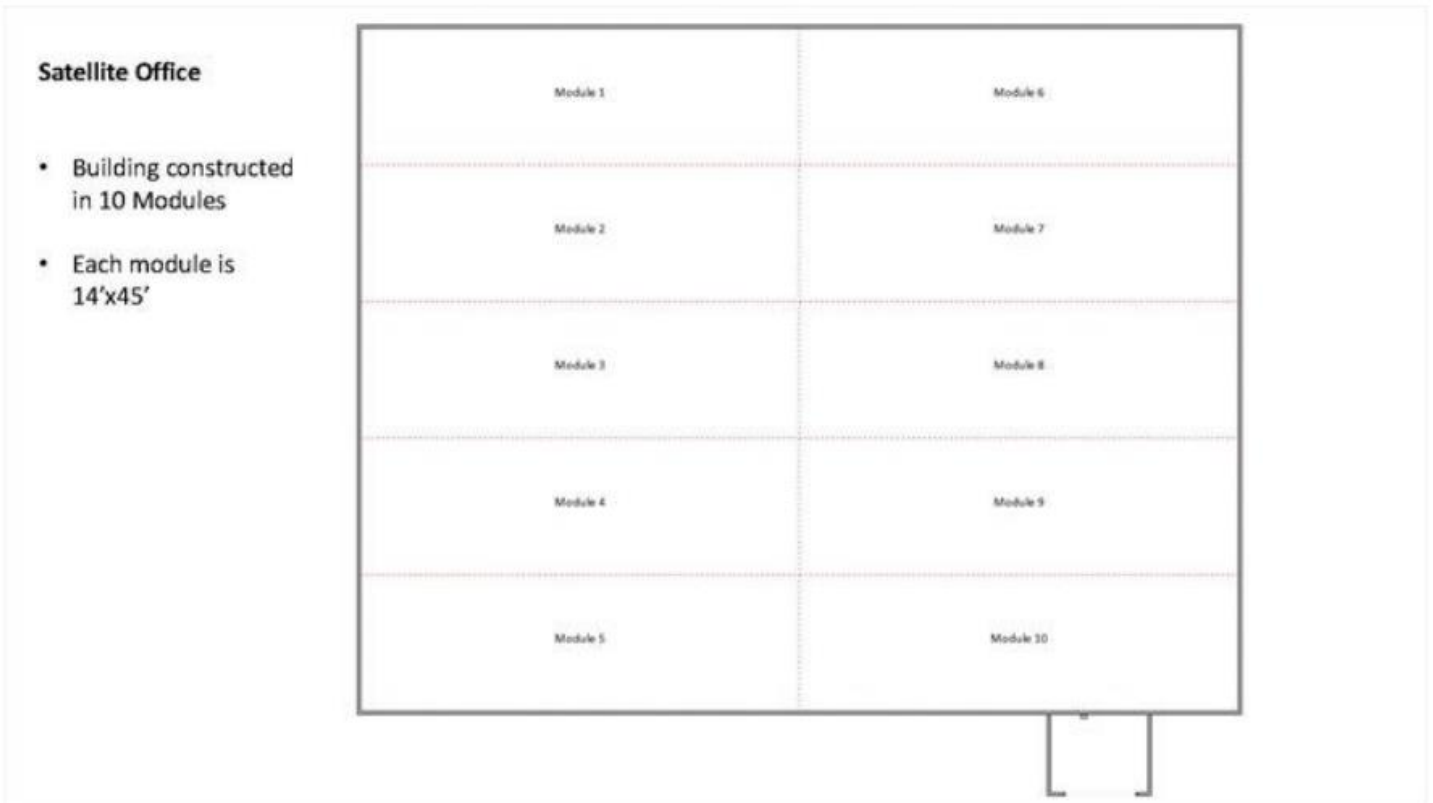


Figure 3. Proposed layout of modular units



Figure 4. Utility Service to the proposed building



Figure 5. Parking Area in relation to building

SECTION C. Environmental Aspects or Potential Sources of Impact:

Air Emissions

Construction of the building will involve emissions from vehicles and fugitive dust.

Discharging to Surface-, Storm-, or Ground Water

The building will have floor drains for floor cleaning and sanitary sewer. There will not be any discharges to surface, storm or ground water.

Disturbing Cultural or Biological Resources

This federal undertaking has been determined to have the potential to affect historic properties under 36 CFR 800.2.

Cultural: A Section 106 review was completed under CRMO project number (BEA-23-09) and resulted in No Historic Properties Affected. Please refer to the Cultural Resource Review (CRR) (BEA-23-09) for details or Hold Points and Project Specific Instructions of the ECP.

Biological: There is the potential for this work to impact vegetation and for project personnel to interact with various wildlife species. A nesting bird survey is required prior to the initiation of activities that might disturb soil or vegetation for activities taking place between April 1st and October 1st.

Generating and Managing Waste

Construction waste will be generated. This project has the potential to generate large quantities of excess soil. All waste will be turned over and managed by Waste Generator Services (WGS).

Releasing Contaminants

The project will purchase, store, and use chemicals for construction activities such as oils, petroleum products, cleaners, etc. Project personnel may use non-hazardous chemical substitutes in the place of hazardous chemicals if the non-hazardous substitutes meet the requirements and specifications of the requester. In addition, project personnel will use spill prevention/minimization measures during storage and use of chemicals and fuels. Ensure Chemical Coordinator will enter these chemicals into the INL Chemical Management Database. All chemicals will be managed in accordance with laboratory procedures. When dispositioning surplus chemicals, project personnel must contact the facility Chemical Coordinator for disposition instructions. Although not anticipated, spills could occur when using chemicals or fueling equipment. In the event of a spill, notify facility Environmental Staff. If the Environmental Staff cannot be contacted, report the release to the Spill Notification Team (208-241-6400). Clean up the spill and turn over spill cleanup materials to WGS.

**DOE-ID NEPA CX DETERMINATION
Idaho National Laboratory**

Using, Reusing, and Conserving Natural Resources

The Project will reuse and recycle materials where economically practicable and will divert waste from disposal in the local Landfill, where conditions allow.

DOE-ID NEPA CX DETERMINATION
Idaho National Laboratory

SECTION D. Determine Recommended Level of Environmental Review, Identify Reference(s), and State Justification: Identify the applicable categorical exclusion from 10 Code of Federal Regulation (CFR) 1021, Appendix B, give the appropriate justification, and the approval date.

For Categorical Exclusions (CXs), the proposed action must not: (1) threaten a violation of applicable statutory, regulatory, or permit requirements for environmental, safety, and health, or similar requirements of Department of Energy (DOE) or Executive Orders; (2) require siting and construction or major expansion of waste storage, disposal, recovery, or treatment or facilities; (3) disturb hazardous substances, pollutants, contaminants, or Comprehensive Environmental Response, Compensation, and Liability Act (CERCLA)-excluded petroleum and natural gas products that pre-exist in the environment such that there would be uncontrolled or unpermitted releases; (4) have the potential to cause significant impacts on environmentally sensitive resources (see 10 CFR 1021). In addition, no extraordinary circumstances related to the proposal exist that would affect the significance of the action. In addition, the action is not "connected" to other action actions (40 CFR 1508.25(a)(1) and is not related to other actions with individually insignificant but cumulatively significant impacts (40 CFR 1608.27(b)(7)).

References:

B1.15 "Support buildings"

Justification:

B1.15 Support buildings. Siting, construction or modification, and operation of support buildings and support structures (including, but not limited to, trailers and prefabricated and modular buildings) within or contiguous to an already developed area (where active utilities and currently used roads are readily accessible). Covered support buildings and structures include, but are not limited to, those for office purposes; parking; cafeteria services; education and training; visitor reception; computer and data processing services; health services or recreation activities; routine maintenance activities; storage of supplies and equipment for administrative services and routine maintenance activities; security (such as security posts); fire protection; small-scale fabrication (such as machine shop activities), assembly, and testing of non-nuclear equipment or components; and similar support purposes, but exclude facilities for nuclear weapons activities and waste storage activities, such as activities covered in B1.10, B1.29, B1.35, B2.6, B6.2, B6.4, B6.5, B6.6, and B6.10 of this appendix.

Is the project funded by the American Recovery and Reinvestment Act of 2009 (Recovery Act) Yes No

Approved by Jason L. Anderson, DOE-ID NEPA Compliance Officer on: 6/22/2023