

DOE-ID NEPA CX DETERMINATION Idaho National Laboratory

SECTION A. Project Title: SMC Tension Fabric Structures

SECTION B. Project Description and Purpose:

SMC Tension Fabric Structures

The Specific Manufacturing Capability (SMC) has identified the need for design and installation of two tension fabric structures to support existing operations by providing covered storage for material. This ECP involves the design and installation of two fully enclosed tension fabric structures to the east of TAN-677 in previously disturbed areas. The first will be directly east of TAN-677 and the second will be north of TAN-1617. (See Figure 1 below for details showing the proposed siting in blue). The proposed structures will both be ~50' by ~90' and approximately 33' tall (See Figure 2). It is anticipated that the structures will be set on concrete blocks and secured to those concrete blocks per manufacturer's recommendation. The gable ends will be secured into the existing asphalt. No power will be run to the structures, and they will not have a fire suppression system.



Figure 1.

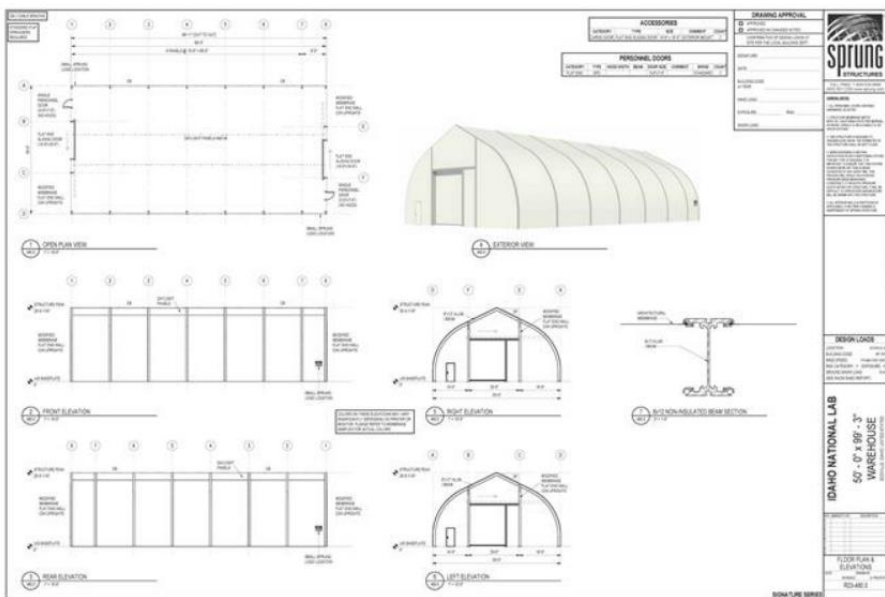


Figure 2.

SECTION C. Environmental Aspects or Potential Sources of Impact:

DOE-ID NEPA CX DETERMINATION

Idaho National Laboratory

Air Emissions

NA

Discharging to Surface-, Storm-, or Ground Water

NA

Disturbing Cultural or Biological Resources

Cultural: Pursuant to the 2023 Programmatic Agreement, this federal undertaking is excluded from Section 106 review as the proposed activity has little to no potential to cause effects to historic properties as the proposed activity will result in construction of temporary structure (up to 3 years). Please see Hold Points and Project Specific Instructions.

Biological: There is the potential for this work to impact vegetation and for project personnel to interact with various wildlife species. A nesting bird survey is required prior to the initiation of activities that might disturb soil or vegetation for activities taking place between April 1st and October 1st.

Generating and Managing Waste

Construction waste will be generated. All waste will be turned over and managed by Waste Generator Services (WGS).

Releasing Contaminants

The project will purchase, store, and use chemicals for construction activities such as oils, petroleum products, cleaners, etc. Project personnel may use non-hazardous chemical substitutes in the place of hazardous chemicals if the non-hazardous substitutes meet the requirements and specifications of the requester. In addition, project personnel will use spill prevention/minimization measures during storage and use of chemicals and fuels. Ensure Chemical Coordinator will enter these chemicals into the INL Chemical Management Database. All chemicals will be managed in accordance with laboratory procedures. When dispositioning surplus chemicals, project personnel must contact the facility Chemical Coordinator for disposition instructions. Although not anticipated, spills could occur when using chemicals or fueling equipment. In the event of a spill, notify facility Environmental Staff. If the Environmental Staff cannot be contacted, report the release to the Spill Notification Team (208-241-6400). Clean up the spill and turn over spill cleanup materials to WGS.

Using, Reusing, and Conserving Natural Resources

The Project will reuse and recycle materials where economically practicable and will divert waste from disposal in the local Landfill, where conditions allow.

DOE-ID NEPA CX DETERMINATION
Idaho National Laboratory

SECTION D. Determine Recommended Level of Environmental Review, Identify Reference(s), and State Justification: Identify the applicable categorical exclusion from 10 Code of Federal Regulation (CFR) 1021, Appendix B, give the appropriate justification, and the approval date.

For Categorical Exclusions (CXs), the proposed action must not: (1) threaten a violation of applicable statutory, regulatory, or permit requirements for environmental, safety, and health, or similar requirements of Department of Energy (DOE) or Executive Orders; (2) require siting and construction or major expansion of waste storage, disposal, recovery, or treatment or facilities; (3) disturb hazardous substances, pollutants, contaminants, or Comprehensive Environmental Response, Compensation, and Liability Act (CERCLA)-excluded petroleum and natural gas products that pre-exist in the environment such that there would be uncontrolled or unpermitted releases; (4) have the potential to cause significant impacts on environmentally sensitive resources (see 10 CFR 1021). In addition, no extraordinary circumstances related to the proposal exist that would affect the significance of the action. In addition, the action is not "connected" to other action actions (40 CFR 1508.25(a)(1) and is not related to other actions with individually insignificant but cumulatively significant impacts (40 CFR 1608.27(b)(7)).

References:

B1.15 "Support buildings"

Justification:

B1.15 Support buildings. Siting, construction or modification, and operation of support buildings and support structures (including, but not limited to, trailers and prefabricated and modular buildings) within or contiguous to an already developed area (where active utilities and currently used roads are readily accessible). Covered support buildings and structures include, but are not limited to, those for office purposes; parking; cafeteria services; education and training; visitor reception; computer and data processing services; health services or recreation activities; routine maintenance activities; storage of supplies and equipment for administrative services and routine maintenance activities; security (such as security posts); fire protection; small-scale fabrication (such as machine shop activities), assembly, and testing of non-nuclear equipment or components; and similar support purposes, but exclude facilities for nuclear weapons activities and waste storage activities, such as activities covered in B1.10, B1.29, B1.35, B2.6, B6.2, B6.4, B6.5, B6.6, and B6.10 of this appendix.

Is the project funded by the American Recovery and Reinvestment Act of 2009 (Recovery Act) Yes No

Approved by Jason L. Anderson, DOE-ID NEPA Compliance Officer on: 6/22/2023