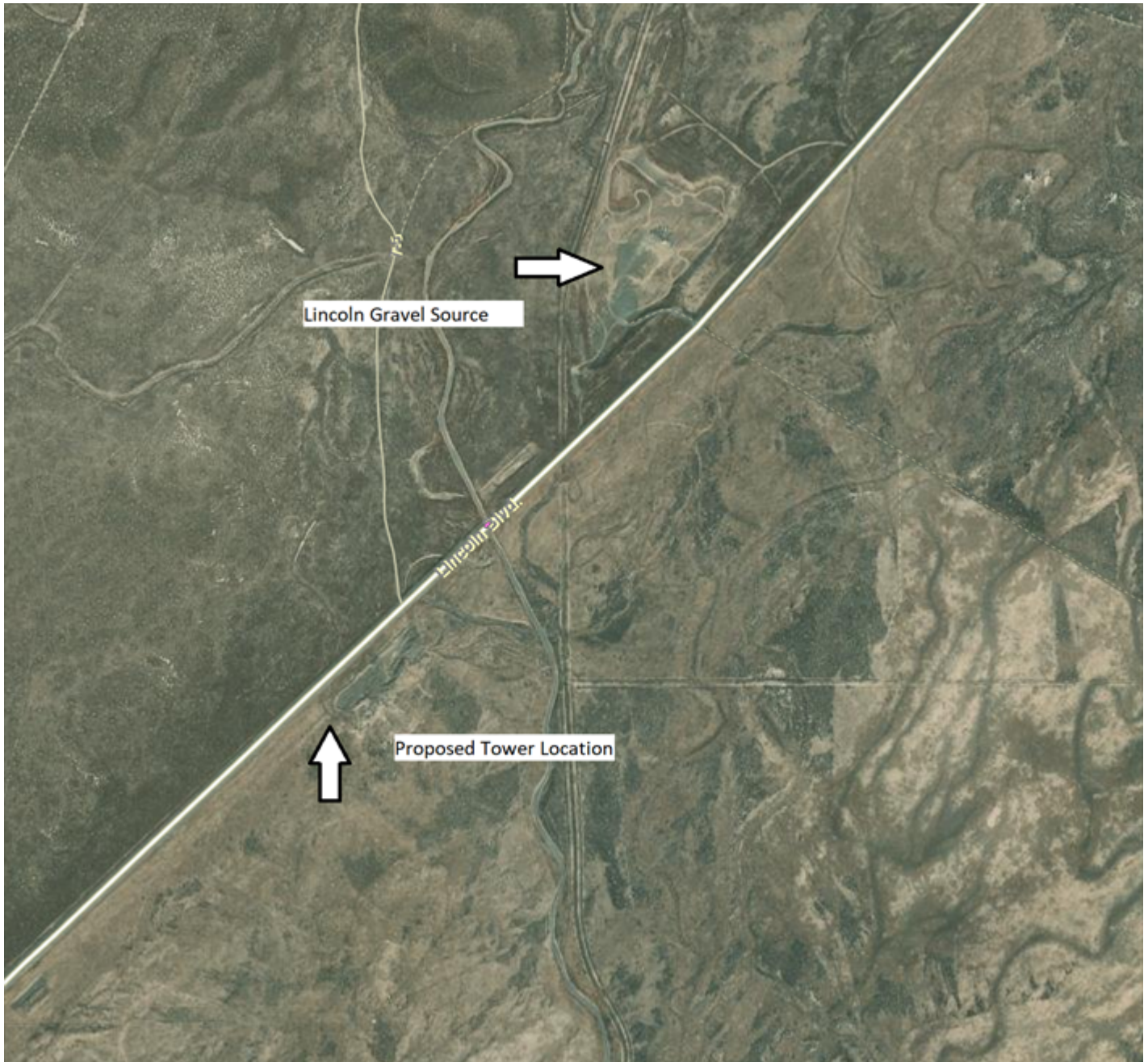


**SECTION A. Project Title:** NOAA Tower Installation

**SECTION B. Project Description and Purpose:**

NOAA Weather Tower Installation

NOAA has been working with the INL to find a suitable location for a new tower and the new desired location is just south of the Lincoln Gravel Pit near an abandoned gravel pit (see map). The reason for a new tower is that NOAA currently has a tower just outside the fence of NRF but will need to remove it soon to accommodate construction.





**DOE-ID NEPA CX DETERMINATION**  
**Idaho National Laboratory**





The area is fairly clear of vegetation and somewhat flat, allowing for erection of the weather tower without too much ground work other than mowing. The tower will be located about 150ft from the road and 85 ft from the abandoned gravel sources. The tower will 10 meters tall and have three guy wires extending from the tower that are 10 meters in length each. The structure footprint will be roughly a 20 meter diameter circle but additional mowing will be necessary for fire protection and to allow for vehicle travel around the tower.

An access road may be need to be built to allow vehicles easier access to the location for erection of the tower.

**SECTION C. Environmental Aspects or Potential Sources of Impact:**

**Air Emissions**

Project construction activities have the potential to create fugitive dust.

**Discharging to Surface-, Storm-, or Ground Water**

NA

**Disturbing Cultural or Biological Resources**

There is the potential for this work to impact vegetation and for project personnel to interact with various wildlife species. A Biological Resource Review will be arranged within two weeks prior to the initiation of any activities that might disturb soil or vegetation and again following completion of project activities. A nesting bird survey is included with the Biological Resource Review for actions occurring between April 1 - October 1 per compliance with the Migratory Bird Treaty Act. Bat surveys are also included with the Biological Resource Review in accordance with the INL Bat Protection Plan.

Cultural: A Section 106 review was completed under CRMO project number (BEA-24-045) and resulted in No Historic Properties Affected. Please see Project Specific Instructions.

**Generating and Managing Waste**

When wastes are generated, how they are disposed can adversely affect the environment. Managing wastes appropriately and responsibly and implementing recycling or reuse practices, where feasible, during project activities can reduce the potential impact on the environment.

**Releasing Contaminants**

When chemicals are used during the project there is the potential for spills that could impact the environment (air, water, soil).

**Using, Reusing, and Conserving Natural Resources**

NA

**Environmental Justice**

NA

**SECTION D. Determine Recommended Level of Environmental Review, Identify Reference(s), and State Justification:** Identify the applicable categorical exclusion from 10 Code of Federal Regulation (CFR) 1021, Appendix B, give the appropriate justification, and the approval date.

For Categorical Exclusions (CXs), the proposed action must not: (1) threaten a violation of applicable statutory, regulatory, or permit requirements for environmental, safety, and health, or similar requirements of Department of Energy (DOE) or Executive Orders; (2) require siting and construction or major expansion of waste storage, disposal, recovery, or treatment or facilities; (3) disturb hazardous substances, pollutants, contaminants, or Comprehensive Environmental Response, Compensation, and Liability Act (CERCLA)-excluded petroleum and natural gas products that pre-exist in the environment such that there would be uncontrolled or unpermitted releases; (4) have the potential to cause significant impacts on environmentally sensitive resources (see 10 CFR 1021). In addition, no extraordinary circumstances related to the proposal exist that would affect the significance of the action. In addition, the action is not "connected" to other action actions (40 CFR 1508.25(a)(1) and is not related to other actions with individually insignificant but cumulatively significant impacts (40 CFR 1608.27(b)(7)).

**References:** B1.19 "Microwave, meteorological, and radio towers"

**Justification:** B1.19 Siting, construction, modification, operation, and removal of microwave, radio communication, and meteorological towers and associated facilities, provided that the towers and associated facilities would not be in a governmentally designated scenic area (see B(4)(iv) of this appendix) unless otherwise authorized by the appropriate governmental entity.

Is the project funded by the American Recovery and Reinvestment Act of 2009 (Recovery Act)  Yes  No

Approved by Robert Douglas Herzog, DOE-ID NEPA Compliance Officer on: 6/13/2024