

SECTION A. Project Title: EBR-I Pre-Season Maintenance and Excess

SECTION B. Project Description and Purpose:

During a walkdown of EBR-I on 10 April 2024 to determine pre-season maintenance needs, the following work was identified as necessary prior to the opening of EBR-I to the public for the Summer 2024 season.

EBR-I Interior Maintenance:

- Move underutilized interpretive signs on the main floor into annex storage room (Figure 1). Frames will be stored on wood sheets to prevent creating indents in the floor tiles, which may contain asbestos.
- Remove “Hearphones” from interpretive displays throughout the building, except for the sign by the turbine on the mezzanine (Figure 1). Save removed components for parts to be used on the display by the turbine if practical.
- Remove non-historic signs from south side of reactor and repair damaged paint the signs are currently hiding (Figure 2). New paint will be matched to the existing paint, which is not original to the reactor. Signs will be placed near guest book, but not mounted to the wall.
- Fabricate new face boards for the ZPR-III infill blocks that mimic the original reactor table (Figures 3, 4, 5). While the frame is the original ZPR-III, the in-fill blocks are wood with taped lines to mimic the table configuration. The tape is currently peeling away from the wood. The new face boards will be printed by CFA, will reduce maintenance to the infill blocks, and will offer a more accurate representation of the table configuration.
- Repair or replace signs in the annex that have fallen off their backing (Figures 6 and 7). These are non-historic, vinyl printed signs.
- Remove out-of-service conduit from floor in “living room” (Figure 8).
- Replace six light bulbs that illuminate the fuel rod display on top of the reactor (no photo).
- Remove cloth curtain in Annex storage room and replace with paper shade, reusing the wood strip above the window as the mount (Figure 9).
- Repair latch in mezzanine women’s restroom, using original hardware that remains in place (Figure 10).

EBR-I Parking Area Maintenance:

- Paint the picnic shelter in the parking lot. This is a non-historic addition to the landscape (no photo). Paint should either match or be a similar color.
- Repair handrails next to the Guard House entry (Figure 11). These are a non-historic addition to the landscape and currently present a hazard for guests as the bases of the posts of deteriorated to the point of failure.
- Repair parking stops (Figure 12).

Excess Requests:

- Excess freestanding literature racks located throughout the building (Figure 13).
- Excess furniture from the Annex office, including desk, filing cabinets, chairs, fax machine, etc (no photo). Microwave and refrigerator are to remain.

These actions are associated with work orders MWR 2024-2387 (EBR1 Electrical Work), MRW 2024-2252 (EBR1 Move Furniture and Excess Identified Items), MWR 2023-5567 (EBR1 Lower parking lot parking stops repair), and MWR 2023-5568 (EBR1 Parking lot rail next to guard house replacement).











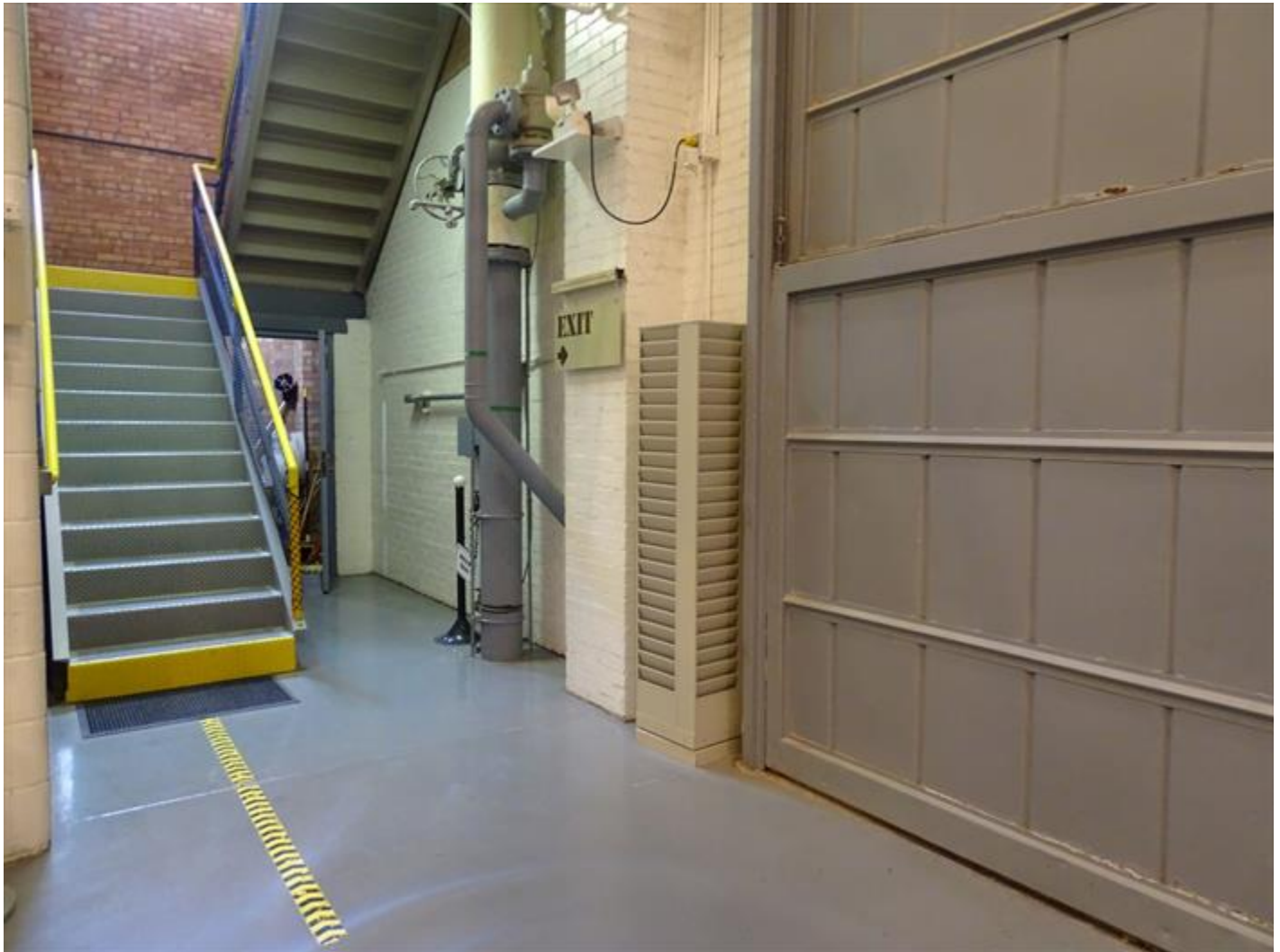












Scope of Work: EBR-I Pre-Season Maintenance

SECTION C. Environmental Aspects or Potential Sources of Impact:

Air Emissions

NA

Discharging to Surface-, Storm-, or Ground Water

NA

Disturbing Cultural or Biological Resources

Cultural: A Section 106 review was completed under CRMO project number (BEA-24-047) and resulted in No Historic Properties Affected. Please refer to the Cultural Resource Review (CRR) (BEA-24-047) for details or Hold Points and Project Specific Instructions of the ECP.

Generating and Managing Waste

When wastes are generated, how they are disposed can adversely affect the environment. Managing wastes appropriately and responsibly and implementing recycling or reuse practices, where feasible, during project activities can reduce the potential impact on the environment.

Releasing Contaminants

When chemicals are used during the project there is the potential for spills that could impact the environment (air, water, soil).

Using, Reusing, and Conserving Natural Resources

Project description indicates materials will need to be purchased or used that require sourcing materials from the environment. Being conscientious about the types of materials used could reduce the impact to our natural resources.

Environmental Justice

According to the CEQ Climate and Economic Justice Screening Tool, the INL site as well as the Research and Education Campus in Idaho Falls, ID are located in U.S. Census tracts that are identified as disadvantaged communities. Census tracts identified as disadvantaged meet or exceed socioeconomic, environmental, health, or demographic thresholds identified by CEQ. Given that activities analyzed in this document will happen within the boundaries of existing DOE/INL land and/or facilities where there are no permanent residents, any impacts to Environmental Justice in surrounding communities are anticipated to be negligible.

SECTION D. Determine Recommended Level of Environmental Review, Identify Reference(s), and State Justification: Identify the applicable categorical exclusion from 10 Code of Federal Regulation (CFR) 1021, Appendix B, give the appropriate justification, and the approval date.

For Categorical Exclusions (CXs), the proposed action must not: (1) threaten a violation of applicable statutory, regulatory, or permit requirements for environmental, safety, and health, or similar requirements of Department of Energy (DOE) or Executive Orders; (2) require siting and construction or major expansion of waste storage, disposal, recovery, or treatment or facilities; (3) disturb hazardous substances, pollutants, contaminants, or Comprehensive Environmental Response, Compensation, and Liability Act (CERCLA)-excluded petroleum and natural gas products that pre-exist in the environment such that there would be uncontrolled or unpermitted releases; (4) have the potential to cause significant impacts on environmentally sensitive resources (see 10 CFR 1021). In addition, no extraordinary circumstances related to the proposal exist that would affect the significance of the action. In addition, the action is not "connected" to other action actions (40 CFR 1508.25(a)(1) and is not related to other actions with individually insignificant but cumulatively significant impacts (40 CFR 1608.27(b)(7)).

References: B1.3 "Routine maintenance", B1.24 "Property transfers"

Justification: Based on the purpose and need and description of the proposed action and potential environmental impacts, the proposed action fits within the class of actions that is listed in DOE CXs B1.24 and B1.3. There are no extraordinary circumstances related to the proposed action that may affect the significance of the environmental effects of the proposal. The proposed action has not been segmented to meet the definition of a categorical exclusion. This proposal is not connected to other actions with potentially significant impacts (40 CFR 1508.25(a)(1)), is not related to other actions with individually insignificant but cumulatively significant impacts (40 CFR 1508.27(b)(7)) and is not precluded by 40 CFR 1506.1 or 10 CFR 1021.211 concerning limitations on actions during preparation of an environmental impact statement.

Authorizing the proposed action will not (1) threaten a violation of applicable statutory, regulatory, or permit requirements for environment, safety, and health, including DOE and/or Executive orders; (2) require siting of new facilities or expansion of existing facilities; (3) disturb hazardous substances, pollutants, or contaminants; (4) adversely affect environmentally sensitive resources; or (5) involve genetically engineered organisms, synthetic biology, governmentally designated noxious weeds, or invasive species.

Is the project funded by the American Recovery and Reinvestment Act of 2009 (Recovery Act) Yes No

Approved by Robert Douglas Herzog, DOE-ID NEPA Compliance Officer on: 6/13/2024