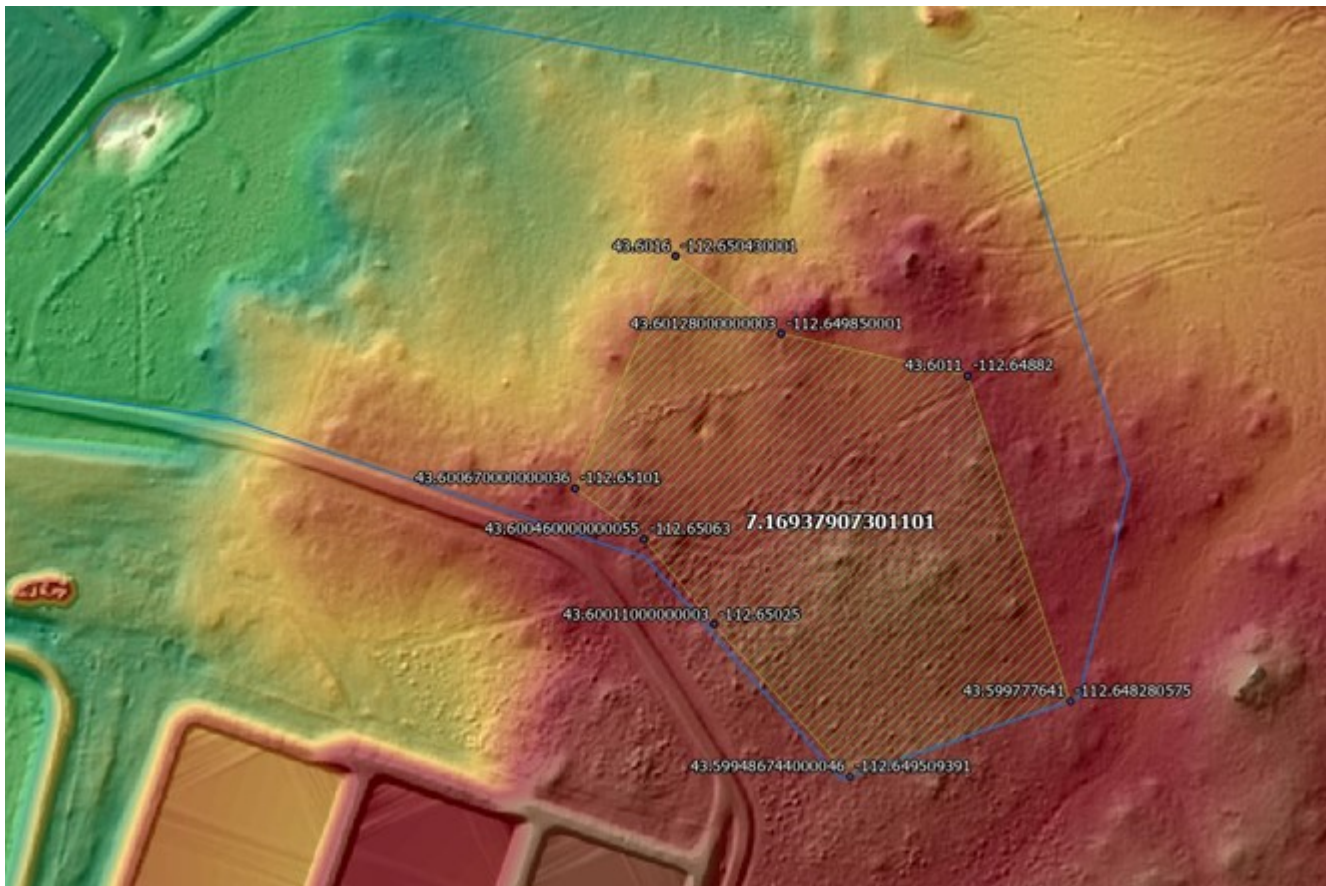


SECTION A. Project Title: Relocatable Storage Units (RSU) Storage Area R1

SECTION B. Project Description and Purpose:

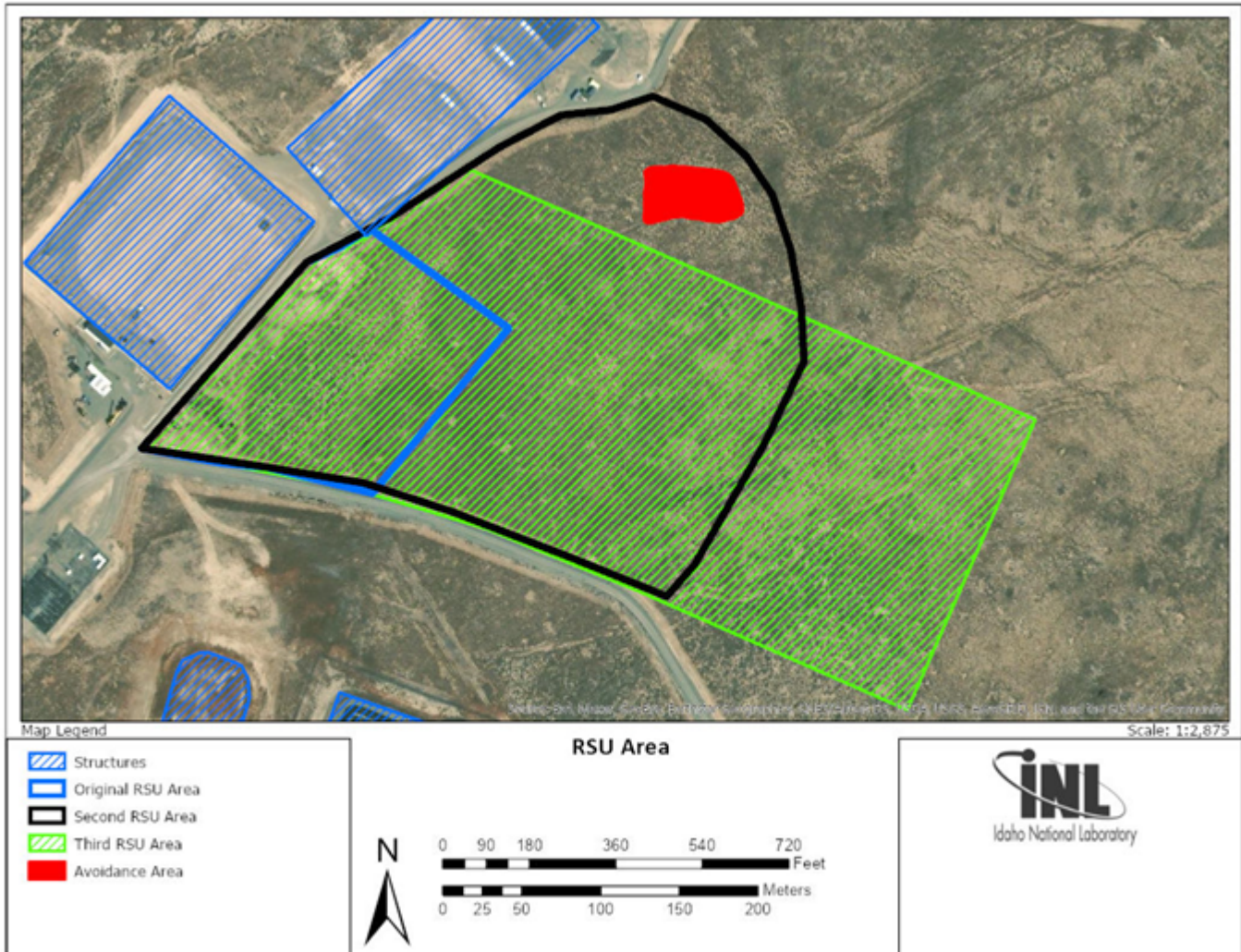
Revision 1:

This revision captures the revised construction area for the RSU Storage Area as shown below:



Original:

The purpose of this project is to establish a storage area for Relocatable Storage Units (RSUs). The site area is approximately 13 acres and is shown below, which is located north of the Materials and Fuels Complex (MFC) and just east of the Radioactive Scrap and Waste Facility (MFC-771) in a sagebrush covered area. The North Relocatable Storage Units (RSU) Storage area presently contains an excess of left-over equipment that is not nor has ever been in use and will be removed. This excess material will be properly disposed of and removed from the proposed RSU site. This site also contains a quantity of trash items such as desks, chairs, cabinets, and shelving units that have been incorrectly placed here. The scope of Utilities and Infrastructure Support (U&IS) work for the area, once cleared of left over equipment and excess material, will be to remove 6" to 12" of soil and replace with ¾ crush/road base and compact to a semi solid surface. Graders, dozers, dump trucks and rollers will be used to prep the area. Archeological monitoring will be provided during grading and leveling given the proximity to protected areas. The removed soil will be transferred to borrow pit areas near MFC or as a last resort transferred to the CFA landfill. Soil moved to borrow pits will be monitored for noxious weeds and managed accordingly. Once the site is appropriately prepped, RSUs from inside MFC will be arranged in organized rows with 4" x 4" dunnage to elevate units off the ground. U&IS will provide site oversight and upkeep after completion and during operation. Jersey barriers will be placed around the storage area to prevent intrusion into the protected area to the North.



Proposed Site for Relocatable Storage Units

SECTION C. Environmental Aspects or Potential Sources of Impact:

Air Emissions

Removal of topsoil/overburden has the potential to generate fugitive dust. Less than 13 acres are expected to be disturbed and replaced by crushed aggregate, using AP-42 emission factors for land clearing activities, total suspended solid emissions are estimated to be less than 0.33 tons. The grading of the area will include mobile equipment including dozers, graders, dump trucks and rollers, which are powered by diesel fuel. As mobile equipment, such equipment is exempted as mobile internal combustion engines per IDAPA 58.01.01.222.02.e. Project activities has the potential to contribute to air emissions from the operation of fuel burning equipment. If mobile sources (equipment) will be used temporarily, they must meet Idaho Administrative Procedures Act (IDAPA) 58.01.01.625 visible emission opacity requirements.

Discharging to Surface-, Storm-, or Ground Water

NA

Disturbing Cultural or Biological Resources

There is the potential for this work to impact vegetation and for project personnel to interact with various wildlife species. A Biological Resource Review will be arranged within two weeks prior to the initiation of any activities that might disturb soil or vegetation and again following completion of project activities. A nesting bird survey is included with the Biological Resource Review for actions occurring between April 1 - October 1 per compliance with the Migratory Bird Treaty Act. Bat surveys are also included with the Biological Resource Review in accordance with the INL Bat Protection Plan.

Cultural: A Section 106 review was completed under CRMO project number (BEA-21-09 R1) and resulted in No Historic Properties Affected. Please refer to the Hold Points and Project Specific Instructions of the ECP.

Generating and Managing Waste

The project will remove excess material and trash items (i.e., desks, chairs, cabinets, and shelving) which will be excessed or disposed of to the CFA Landfill Complex. All waste generated will be turned over and managed by Waste Generator Services.

The project will generate large quantities of excess soil which will be transferred to a burrow pit area or to the CFA Landfill Complex. It is estimated that approximately 20,973 cubic yards of soil would be removed.

Releasing Contaminants

Typical construction chemicals such as fuels or lubricants, etc., will be used and will be submitted to chemical inventory lists with associated Safety Data Sheets (SDSs) for approval in the vendor data system prior to use. The facility Chemical Coordinator will enter these chemicals into the INL Chemical Management Database. All chemicals will be managed in accordance with laboratory procedures. When dispositioning surplus chemicals, project personnel must contact the facility Chemical Coordinator for disposition instructions.

The proposed areas are not located in a CERCLA site, so no Notice of Soil Disturbance is required.

Pesticides may be applied on areas where native or naturalized vegetation has been removed.

Using, Reusing, and Conserving Natural Resources

All materials would be reused and/or recycled where economically practicable. All applicable waste would be diverted from disposal in the landfill where conditions allow. The project would practice sustainable acquisition.

Environmental Justice

According to the CEQ Climate and Economic Justice Screening Tool, the INL site as well as the Research and Education Campus in Idaho Falls, ID are located in U.S. Census tracts that are identified as disadvantaged communities. Census tracts identified as disadvantaged meet or exceed socioeconomic, environmental, health, or demographic thresholds identified by CEQ. Given that activities analyzed in this document will happen within the boundaries of existing DOE/INL land and/or facilities where there are no permanent residents, any impacts to Environmental Justice in surrounding communities are anticipated to be negligible.

SECTION D. Determine Recommended Level of Environmental Review, Identify Reference(s), and State Justification: Identify the applicable categorical exclusion from 10 Code of Federal Regulation (CFR) 1021, Appendix B, give the appropriate justification, and the approval date.

For Categorical Exclusions (CXs), the proposed action must not: (1) threaten a violation of applicable statutory, regulatory, or permit requirements for environmental, safety, and health, or similar requirements of Department of Energy (DOE) or Executive Orders; (2) require siting and construction or major expansion of waste storage, disposal, recovery, or treatment or facilities; (3) disturb hazardous substances, pollutants, contaminants, or Comprehensive Environmental Response, Compensation, and Liability Act (CERCLA)-excluded petroleum and natural gas products that pre-exist in the environment such that there would be uncontrolled or unpermitted releases; (4) have the potential to cause significant impacts on environmentally sensitive resources (see 10 CFR 1021). In addition, no extraordinary circumstances related to the proposal exist that would affect the significance of the action. In addition, the action is not "connected" to other action actions (40 CFR 1508.25(a)(1)) and is not related to other actions with individually insignificant but cumulatively significant impacts (40 CFR 1608.27(b)(7)).

References: B1.15 "Support buildings", B1.24 "Property transfers"

Justification: Based on the purpose and need and description of the proposed action and potential environmental impacts, the proposed action fits within the class of actions that is listed in Appendix B CX B1.15 and B1.24. There are no extraordinary circumstances related to the proposed action that may affect the significance of the environmental effects of the proposal. The proposed action has not been segmented to meet the definition of a categorical exclusion. This proposal is not connected to other actions with potentially significant impacts (40 CFR 1508.25(a)(1)), is not related to other actions with individually insignificant but cumulatively significant impacts (40 CFR 1508.27(b)(7)) and is not precluded by 40 CFR 1506.1 or 10 CFR 1021.211 concerning limitations on actions during preparation of an environmental impact statement.

Authorizing the proposed action will not (1) threaten a violation of applicable statutory, regulatory, or permit requirements for environment, safety, and health, including DOE and/or Executive orders; (2) require siting of new facilities or expansion of existing facilities; (3) disturb hazardous

DOE-ID NEPA CX DETERMINATION
Idaho National Laboratory

substances, pollutants, or contaminants; (4) adversely affect environmentally sensitive resources; or (5) involve genetically engineered organisms, synthetic biology, governmentally designated noxious weeds, or invasive species.

Is the project funded by the American Recovery and Reinvestment Act of 2009 (Recovery Act) Yes No

Approved by Robert Douglas Herzog, DOE-ID NEPA Compliance Officer on: 8/12/2024