

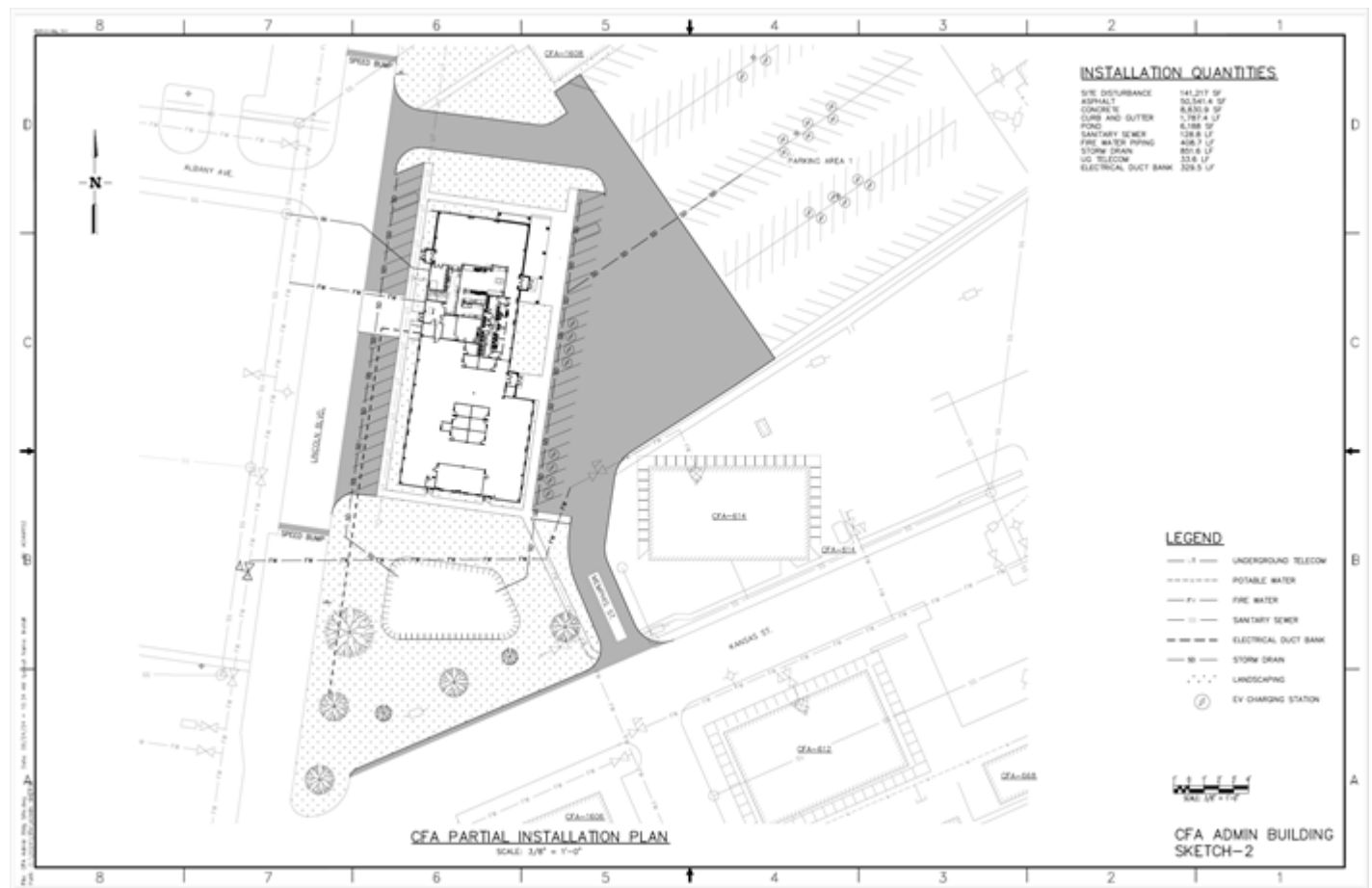
SECTION A. Project Title: CFA Administration Building Geotechnical Investigation

SECTION B. Project Description and Purpose:

The purpose of this project is to perform geotechnical investigation to support the design and construction of an Administration Building at the Idaho National Laboratory's (INL's) Central Facilities Area (CFA). Geotechnical investigations are performed to obtain data about the subsurface soil and rock conditions of the proposed development site. It helps to understand the foundation requirements for the construction of any new infrastructures, underground utilities, underground parking lot and surrounding parking areas. These investigations are essential for design and structural engineers to recommend design criteria for the construction and design approach for each project. Geotechnical investigations are usually performed by drilling and analyzing a number on core samples near the project location. No waste generation is anticipated.

The CFA Administration Building is planned to be a one-story structure with a proposed footprint of approximately 19,000 gsf. No provisions are made for future horizontal or vertical expansion. The anticipated support system will be steel gravity framing and exterior insulated precast concrete panels with load bearing shear walls. The anticipated maximum service-level column loads are 34 kips dead load + 48 kips live load + 30 kips wind load. The anticipated maximum service-level wall loads are 2.8 kips/ft dead load. This environmental compliance permit does not cover construction or operation of the facility.

The location for the proposed facility is Northwest of the CFA-614, east side of Lincoln Boulevard.



SECTION C. Environmental Aspects or Potential Sources of Impact:

Air Emissions

This activity has the potential to generate fugitive dust.

Discharging to Surface-, Storm-, or Ground Water

NA

Disturbing Cultural or Biological Resources

There is the potential for this work to impact vegetation and for project personnel to interact with various wildlife species. A Biological Resource Review will be arranged within two weeks prior to the initiation of any activities that might disturb soil or vegetation and again following completion of project activities. A nesting bird survey is included with the Biological Resource Review for actions occurring between April 1 - October 1 per compliance with the Migratory Bird Treaty Act. Bat surveys are also included with the Biological Resource Review in accordance with the INL Bat Protection Plan.

Cultural: A Section 106 review was completed under CRMO project number (BEA-25-015) and resulted in No Historic Properties Affected.

Generating and Managing Waste

NA

Releasing Contaminants

When chemicals are used during the project there is the potential for spills that could impact the environment (air, water, soil).

Using, Reusing, and Conserving Natural Resources

NA

Environmental Justice

According to the CEQ Climate and Economic Justice Screening Tool, the INL site and the Research and Education Campus in Idaho Falls, ID are located in U.S. Census tracts identified as disadvantaged communities. These tracts meet or exceed socioeconomic, environmental, health, or demographic thresholds identified by CEQ. The geotechnical investigation for the Administration Building at the INL Central Facilities Area (CFA) will occur within the DOE/INL land, an 890 square mile site in the Southeast Idaho desert with no permanent residents. Therefore, any impacts to Environmental Justice in surrounding communities are anticipated to be negligible, assuming all hold points and project-specific instructions are followed.

SECTION D. Determine Recommended Level of Environmental Review, Identify Reference(s), and State Justification: Identify the applicable categorical exclusion from 10 Code of Federal Regulation (CFR) 1021, Appendix B, give the appropriate justification, and the approval date.
--

For Categorical Exclusions (CXs), the proposed action must not: (1) threaten a violation of applicable statutory, regulatory, or permit requirements for environmental, safety, and health, or similar requirements of Department of Energy (DOE) or Executive Orders; (2) require siting and construction or major expansion of waste storage, disposal, recovery, or treatment or facilities; (3) disturb hazardous substances, pollutants, contaminants, or Comprehensive Environmental Response, Compensation, and Liability Act (CERCLA)-excluded petroleum and natural gas products that pre-exist in the environment such that there would be uncontrolled or unpermitted releases; (4) have the potential to cause significant impacts on environmentally sensitive resources (see 10 CFR 1021). In addition, no extraordinary circumstances related to the proposal exist that would affect the significance of the action. In addition, the action is not "connected" to other action actions (40 CFR 1508.25(a)(1) and is not related to other actions with individually insignificant but cumulatively significant impacts (40 CFR 1608.27(b)(7)).

References: B3.1 "Site characterization and environmental monitoring"

Justification: Based on the purpose and need and description of the proposed action and potential environmental impacts, the proposed action fits within the class of actions that is listed in Appendix B CX B3.1. There are no extraordinary circumstances related to the proposed action that may affect the significance of the environmental effects of the proposal. The proposed action has not been segmented to meet the definition of a categorical exclusion. This proposal is not connected to other actions with potentially significant impacts (40 CFR 1508.25(a)(1)), is not related to other actions with individually insignificant but cumulatively significant impacts (40 CFR 1508.27(b)(7)) and is not precluded by 40 CFR 1506.1 or 10 CFR 1021.211 concerning limitations on actions during preparation of an environmental impact statement.

Authorizing the proposed action will not (1) threaten a violation of applicable statutory, regulatory, or permit requirements for environment, safety, and health, including DOE and/or Executive orders; (2) require siting of new facilities or expansion of existing facilities; (3) disturb hazardous substances, pollutants, or contaminants; (4) adversely affect environmentally sensitive resources; or (5) involve genetically engineered organisms, synthetic biology, governmentally designated noxious weeds, or invasive species.

B3.1 Site characterization and environmental monitoring. Site characterization and environmental monitoring (including, but not limited to, siting, construction, modification, operation, and dismantlement and removal or otherwise proper closure (such as of a well) of characterization and monitoring devices, and siting, construction, and associated operation of a small-scale laboratory building or renovation of a room in an existing building for sample analysis). Such activities would be designed in conformance with applicable requirements and use best management practices to limit the potential effects of any resultant ground disturbance. Covered activities include, but are not limited to, site characterization and environmental monitoring under CERCLA and RCRA. (This class of actions excludes activities in aquatic environments. See B3.16 of this appendix for such activities.) Specific activities include, but are not limited to: Geological, geophysical (such as gravity, magnetic, electrical, seismic, radar,

DOE-ID NEPA CX DETERMINATION
Idaho National Laboratory

and temperature gradient), geochemical, and engineering surveys and mapping, and the establishment of survey marks. Seismic techniques would not include large-scale reflection or refraction testing; Installation and operation of field instruments (such as stream-gauging stations or flow-measuring devices, telemetry systems, geochemical monitoring tools, and geophysical exploration tools);Drilling of wells for sampling or monitoring of groundwater or the vadose (unsaturated) zone, well logging, and installation of water-level recording devices in wells; Aquifer and underground reservoir response testing; Installation and operation of ambient air monitoring equipment; Sampling and characterization of water, soil, rock, or contaminants (such as drilling using truck- or mobile-scale equipment, and modification, use, and plugging of boreholes);Sampling and characterization of water effluents, air emissions, or solid waste streams; Installation and operation of meteorological towers and associated activities (such as assessment of potential wind energy resources);Sampling of flora or fauna; and Archeological, historic, and cultural resource identification in compliance with 36 CFR part 800 and 43 CFR part 7.

Is the project funded by the American Recovery and Reinvestment Act of 2009 (Recovery Act) Yes No

Approved by Robert Douglas Herzog, DOE-ID NEPA Compliance Officer on: 12/9/2024