

**SECTION A. Project Title:** CITRC Multi-Purpose Facility Geotechnical Survey Revision 1

**SECTION B. Project Description and Purpose:**

CITRC Multi-Purpose Facility Geotechnical Survey Revision 1

The CITRC Multi-Purpose Facility Project needs a suitable building site at CITRC. The purpose of this revision is to expand the footprint of exploration for the new building. See Figure 1 below for the expanded footprint.

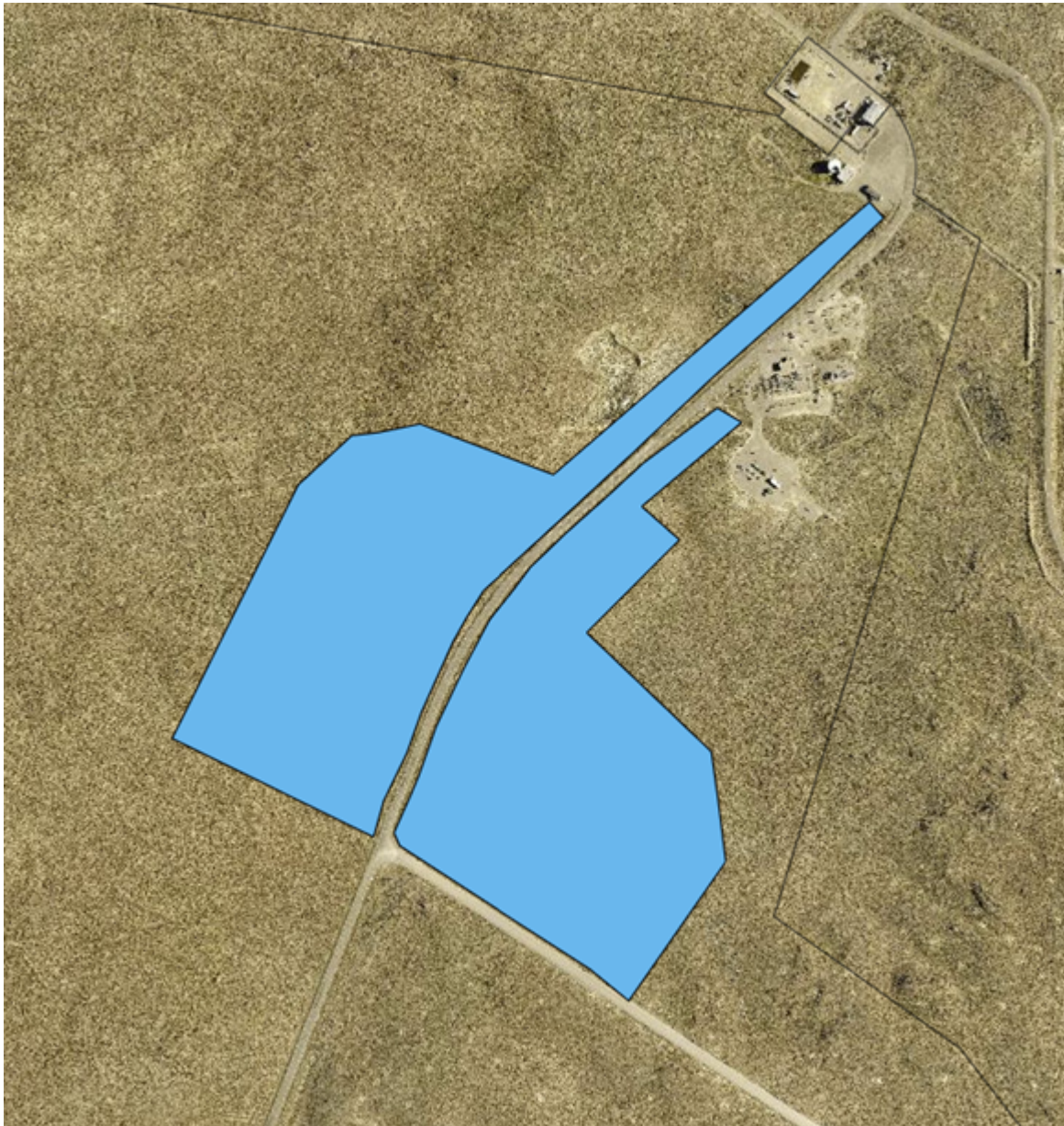


Figure 1.

Original Scope:

CITRC Multi-Purpose Facility Geotechnical Investigations

This scope of work is to perform the geotechnical investigation for the Critical Infrastructure Test Range Complex (CITRC) Multi-Purpose Facility, a building that will provide multi-purpose high bay space in conjunction with office space. The geotechnical investigation will be performed in two separate locations as the project team will utilize the data to finalize the building location. See Figure 2 for proposed locations.



Figure 2.

Prior to performing geotechnical boring, the contractor will utilize ground penetrating radar to do preliminary subsurface investigations, as necessary. This will be done in conjunction with backhoe potholing to depths of approximately five feet to validate the GPR data. All potholes will be backfilled. Following this initial investigation, a subcontractor will perform approximately 20 borings/soil samples at the desired location. Each boring will be to a depth of 20 feet. Upon completion of the borings, they will also be backfilled. Results from each boring will be documented and logged and submitted to the Contractor.

#### **SECTION C. Environmental Aspects or Potential Sources of Impact:**

##### **Air Emissions**

This activity has the potential to generate fugitive dust.



#### Discharging to Surface-, Storm-, or Ground Water

NA

#### Disturbing Cultural or Biological Resources

There is the potential for this work to impact vegetation and for project personnel to interact with various wildlife species. A Biological Resource Review will be arranged within two weeks prior to the initiation of any activities that might disturb soil or vegetation and again following completion of project activities. A nesting bird survey is included with the Biological Resource Review for actions occurring between April 1 - October 1 per compliance with the Migratory Bird Treaty Act. Bat surveys are also included with the Biological Resource Review in accordance with the INL Bat Protection Plan.

Cultural: A Section 106 review was completed under CRMO project number (BEA-25-013 R2) and resulted in No Historic Properties Affected. Please refer to the Hold Points and Project Specific Instructions of the ECP.

#### Generating and Managing Waste

NA

#### Releasing Contaminants

When chemicals are used during the project there is the potential for spills that could impact the environment (air, water, soil).

#### Using, Reusing, and Conserving Natural Resources

NA

#### Environmental Justice

N/A

**SECTION D. Determine Recommended Level of Environmental Review, Identify Reference(s), and State Justification:** Identify the applicable categorical exclusion from 10 Code of Federal Regulation (CFR) 1021, Appendix B, give the appropriate justification, and the approval date.

For Categorical Exclusions (CXs), the proposed action must not: (1) threaten a violation of applicable statutory, regulatory, or permit requirements for environmental, safety, and health, or similar requirements of Department of Energy (DOE) or Executive Orders; (2) require siting and construction or major expansion of waste storage, disposal, recovery, or treatment or facilities; (3) disturb hazardous substances, pollutants, contaminants, or Comprehensive Environmental Response, Compensation, and Liability Act (CERCLA)-excluded petroleum and natural gas products that pre-exist in the environment such that there would be uncontrolled or unpermitted releases; (4) have the potential to cause significant impacts on environmentally sensitive resources (see 10 CFR 1021). In addition, no extraordinary circumstances related to the proposal exist that would affect the significance of the action. In addition, the action is not "connected" to other action actions (40 CFR 1508.25(a)(1) and is not related to other actions with individually insignificant but cumulatively significant impacts (40 CFR 1608.27(b)(7)).

**References:** B3.1 "Site characterization and environmental monitoring"

**Justification:** Based on the purpose and need and description of the proposed action and potential environmental impacts, the proposed action fits within the class of actions that is listed in Appendix B CX B3.1. There are no extraordinary circumstances related to the proposed action that may affect the significance of the environmental effects of the proposal (10 CFR 1021.410(b)(2)). The proposed action has not been segmented to meet the definition of a categorical exclusion (10 CFR 1021.410(b)(3)). This proposal is not connected to other actions with potentially significant impacts, is not related to other actions with individually insignificant but cumulatively significant impacts, and is not precluded by 10 CFR 1021.211 concerning limitations on actions during preparation of an environmental impact statement (10 CFR 1021.410(b)(3)).

Authorizing the proposed action will not (1) threaten a violation of applicable statutory, regulatory, or permit requirements for environment, safety, and health, including DOE and/or Executive orders; (2) require siting of new facilities or expansion of existing facilities; (3) disturb hazardous substances, pollutants, or contaminants; (4) adversely affect environmentally sensitive resources; or (5) involve genetically engineered organisms, synthetic biology, governmentally designated noxious weeds, or invasive species.

B3.1 Site characterization and environmental monitoring. Site characterization and environmental monitoring (including, but not limited to, siting, construction, modification, operation, and dismantlement and removal or otherwise proper closure (such as of a well) of characterization and monitoring devices, and siting, construction, and associated operation of a small-scale laboratory building or renovation of a room in an existing building for sample analysis). Such activities would be designed in conformance with applicable requirements and use best management practices to limit the potential effects of any resultant ground disturbance. Covered activities include, but are not limited to, site characterization and environmental monitoring under CERCLA and RCRA. (This class of actions excludes activities in aquatic environments. See B3.16 of this appendix for such activities.) Specific activities include, but are not limited to: Geological, geophysical (such as gravity, magnetic, electrical, seismic, radar, and temperature gradient), geochemical, and engineering surveys and mapping, and the establishment of survey marks. Seismic techniques would not include large-scale reflection or refraction testing; Installation and operation of field instruments (such as stream-gauging stations or flow-measuring

**DOE-ID NEPA CX DETERMINATION**  
**Idaho National Laboratory**

Page 4 of 4

CX Posting No.: DOE-ID-INL-24-105 R1

devices, telemetry systems, geochemical monitoring tools, and geophysical exploration tools);Drilling of wells for sampling or monitoring of groundwater or the vadose (unsaturated) zone, well logging, and installation of water-level recording devices in wells; Aquifer and underground reservoir response testing; Installation and operation of ambient air monitoring equipment; Sampling and characterization of water, soil, rock, or contaminants (such as drilling using truck- or mobile-scale equipment, and modification, use, and plugging of boreholes);Sampling and characterization of water effluents, air emissions, or solid waste streams; Installation and operation of meteorological towers and associated activities (such as assessment of potential wind energy resources);Sampling of flora or fauna; and Archeological, historic, and cultural resource identification in compliance with 36 CFR part 800 and 43 CFR part 7.

Is the project funded by the American Recovery and Reinvestment Act of 2009 (Recovery Act)      ☐ Yes    ☒ No

Approved by Robert Douglas Herzog, DOE-ID NEPA Compliance Officer on: 5/2/2025