

**U.S. Department of Energy-Idaho Operations Office
National Environmental Policy Act
Categorical Exclusion Determination**

Page 1 of 4

Categorical Exclusion Posting No.: DOE-ID-INL-26-015

Project Title: New Office Trailer N.W. Area of MFC

Project Description and Purpose:

PROJECT OVERVIEW: This project involves the installation of a new temporary office trailer to replace MFC-1727 at the Materials and Fuels Complex (MFC) of the Idaho National Laboratory (INL). This modular office unit will accommodate a minimum of 45 occupants. The project includes site preparation, utility connections, and the placement of the trailer in the northwestern corner of MFC. Key systems affected include potable water, sewer, power, communications, and fire alarm.

PROJECT LOCATION: The project is in the northwestern corner MFC at the INL. The site is in a Comprehensive Environmental Response, Compensation, and Liability Act (CERCLA) area, Argonne National Laboratory Site 74 (ANL-74). The project plans to initially install two trailers, with potential for more. The site is adjacent to the potable water/fire water line and sewer main, with utility feeds originating from Electrical Maintenance EM-60 or EH-23 for power and Telecommunications/Information Management TM-30 for data/IT infrastructure. The existing gravel roadway east of the site will be paved with asphalt as part of the project.

PROPOSED ACTIVITIES: The proposed activities for this project include Site preparation, including grading, foundation installation, and Americans with Disabilities Act (ADA)-compliant sidewalk construction. Utility connections for potable water, sewer, fire suppression, emergency lighting, network cabling, and power. Installation of the contractor furnished modular office unit, including final utility terminations. Compliance with relevant codes and standards, including Idaho Manufactured Home Installation Standards, American Society of Civil Engineers Standard 7 (Minimum Design Loads and Associated Criteria for Buildings and Other Structures) (ASCE 7), National Electrical Code (NEC), applicable National Fire Alarm and Signaling Code (NFPA) codes and standards, and International Building Code (IBC) requirements. Pavement of the existing gravel roadway to provide paved access to the site. Quality-level engineering activities per INL standards.

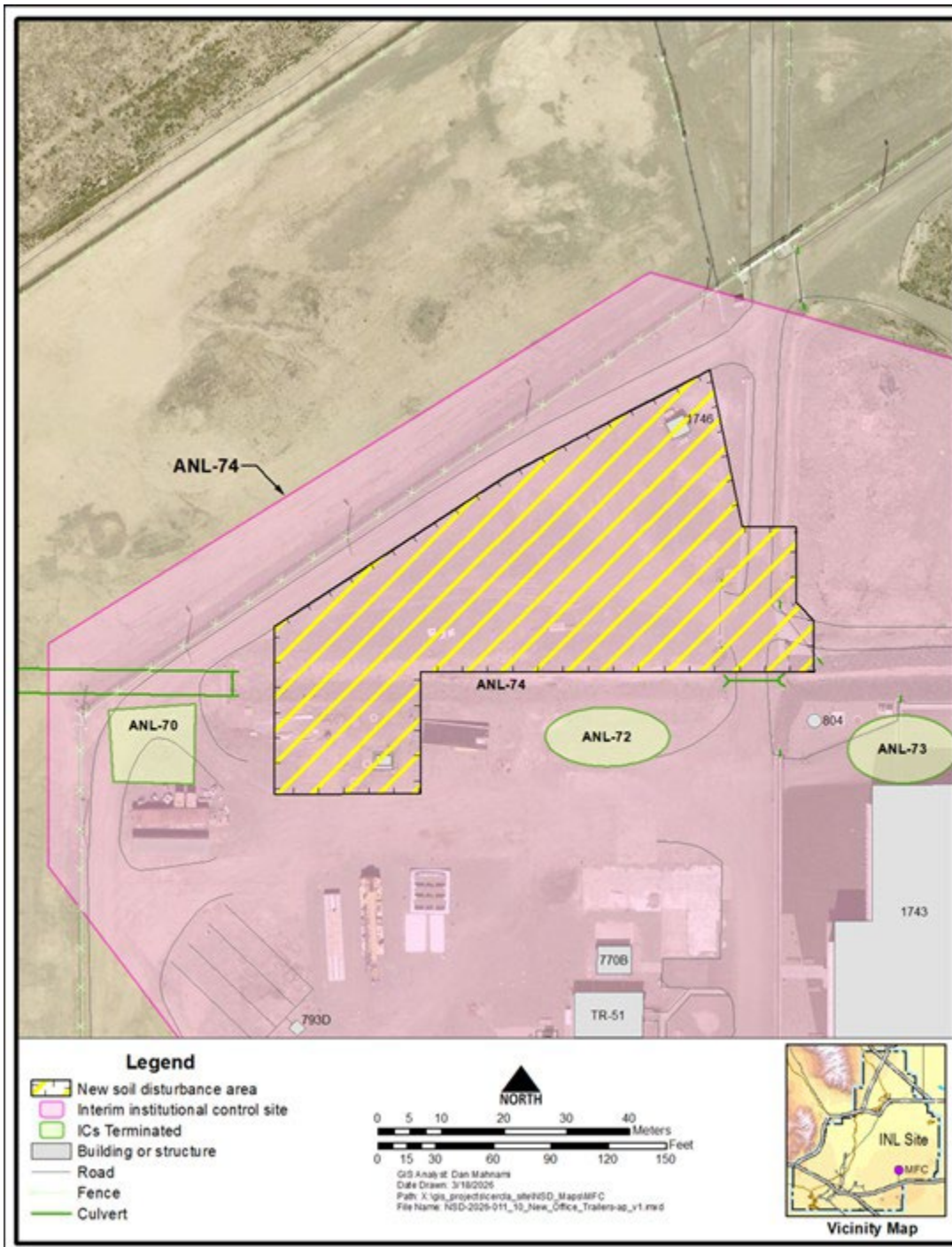
MATERIALS & EQUIPMENT: Materials and equipment for the project include: A prefabricated modular office unit, provided by Battelle Energy Alliance (BEA). Concrete for foundations, slabs, and sidewalks, sloped at a minimum of 2% where feasible. Utility lines and components, including water valves, fire suppression systems, and electrical wiring.

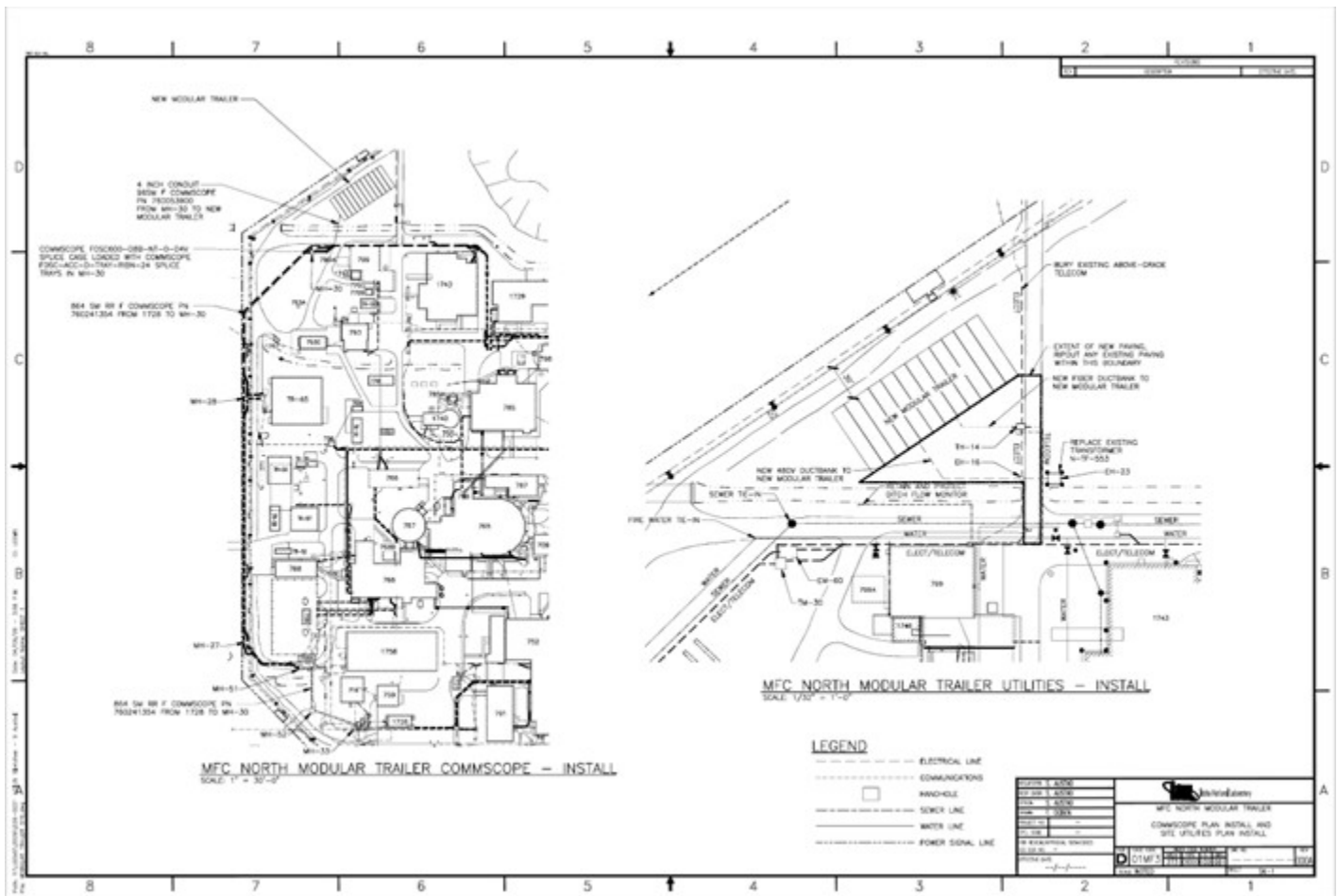
WASTE MANAGEMENT: Waste management activities will include the proper disposal of construction materials and debris in accordance with INL and Department of Energy (DOE) guidelines. Splash pads will be installed below roof drains and gutters to manage runoff, and heat tracing will be applied to gutters to prevent freezing. Waste generated during the project will be disposed of through INL's designated channels, ensuring compliance with environmental regulations. Soil waste generated for the project is estimated to be 101 cubic yards. The project intends to reuse excavated soil as backfill, if the excavated material meets the criteria for reuse.

SCHEDULE OF PROPOSED ACTIVITIES: The project is expected to span several months, with a general timeline as follows:

1. Site preparation, including grading and foundation installation.
2. Utility trenching and connection to existing systems.
3. Installation of the modular office unit.
4. Final utility terminations, including electrical, water, sewer, and network connections.
5. Pavement of the existing gravel roadway. 6. Final inspections and occupancy preparations.

U.S. Department of Energy-Idaho Operations Office
National Environmental Policy Act
Categorical Exclusion Determination





Environmental Aspects or Potential Sources of Impact:

Air Emissions

Potential to cause fugitive dust emissions. Potential to cause emissions from the operation and use of mobile or portable equipment.

Discharging to Surface-, Storm-, or Ground Water

Project personnel must manage storm water discharges to prevent unauthorized releases of any substances, except storm water, to all storm water drains and manholes.

Disturbing Cultural or Biological Resources

There is the potential for this work to impact vegetation and for project personnel to interact with various wildlife species. A Biological Resource Review will be arranged within two weeks prior to the initiation of any activities that might disturb soil or vegetation and again following completion of project activities. A nesting bird survey is included with the Biological Resource Review for actions occurring between April 1 - October 1 per compliance with the Migratory Bird Treaty Act. Bat surveys are also included with the Biological Resource Review in accordance with the INL Bat Protection Plan.

CULTURAL: A Section 106 review was completed under CRMO project number (BEA-26-046) and resulted in No Historic Properties Affected. Please refer to Hold Points and Project Specific Instructions of the ECP.

Generating and Managing Waste

When wastes are generated, how they are disposed can adversely affect the environment. Managing wastes appropriately and responsibly and implementing recycling or reuse practices, where feasible, during project activities can reduce the potential impact on the environment.

**U.S. Department of Energy-Idaho Operations Office
National Environmental Policy Act
Categorical Exclusion Determination**

Releasing Contaminants

When chemicals are used during the project there is the potential for spills that could impact the environment (air, water, soil).

Using, Reusing, and Conserving Natural Resources

Project activities have the opportunity to reduce the impact on our natural resources by recycling or diverting materials from disposal in the landfill.

Determination:

References: B1.15 "Support buildings"

B1.15 Support buildings. Siting, construction or modification, and operation of support buildings and support structures (including, but not limited to, trailers and prefabricated and modular buildings) within or contiguous to an already developed area (where active utilities and currently used roads are readily accessible). Covered support buildings and structures include, but are not limited to, those for office purposes; parking; cafeteria services; education and training; visitor reception; computer and data processing services; health services or recreation activities; routine maintenance activities; storage of supplies and equipment for administrative services and routine maintenance activities; security (such as security posts); fire protection; small-scale fabrication (such as machine shop activities), assembly, and testing of non-nuclear equipment or components; and similar support purposes, but exclude facilities for nuclear weapons activities and waste storage activities, such as activities covered in B1.10, B1.29, B1.35, B2.6, B6.2, B6.4, B6.5, B6.6, and B6.10 of this appendix.

The proposal fits within the classes of actions listed in Appendix B to 10 CFR Part 1021 or Appendix B and C of DOE's NEPA Implementing Procedures and satisfies the conditions that are integral elements of the classes of actions therein. The proposal does not: (1) threaten a violation of applicable statutory, regulatory, or permit requirements for environment, safety, and health, or similar requirements of DOE or Executive Orders; (2) require siting and construction or major expansion of waste storage, disposal, recovery, or treatment facilities (including incinerators), but the proposal may include categorically excluded waste storage, disposal, recovery, or treatment actions or facilities; (3) disturb hazardous substances, pollutants, contaminants, or CERCLA-excluded petroleum and natural gas products that preexist in the environment such that there would be uncontrolled or unpermitted releases; (4) have the potential to cause significant impacts on environmentally sensitive resources, including, but not limited to, those listed in paragraph B(4) of 10 CFR Part 1021, Appendix B; (5) involve genetically engineered organisms, synthetic biology, governmentally designated noxious weeds, or invasive species, unless the proposed activity would be contained or confined in a manner designed and operated to prevent unauthorized release into the environment and conducted in accordance with applicable requirements, such as those listed in paragraph B(5) of 10 CFR Part 1021, Appendix B.

There is no extraordinary circumstance related to the proposal that is likely to cause a reasonably foreseeable significant adverse effect or for which DOE does not know the environmental effect. Extraordinary circumstances are unique situations presented by specific proposals, including, but not limited to, scientific controversy about the environmental effects of the proposal; uncertain effects or effects involving unique or unknown risks; and unresolved conflicts concerning alternative uses of available resources.

The proposal has not been segmented to meet the definition of a categorical exclusion. Segmentation can occur when a proposal is broken down into small parts in order to avoid the appearance of significance of the total action. However, segmentation does not include proposals that are developed and potentially implemented over multiple phases where each phase results in a decision whether to proceed to the subsequent phase.

Approved by Robert Douglas Herzog, DOE-ID NEPA Compliance Officer on: 4/30/2026